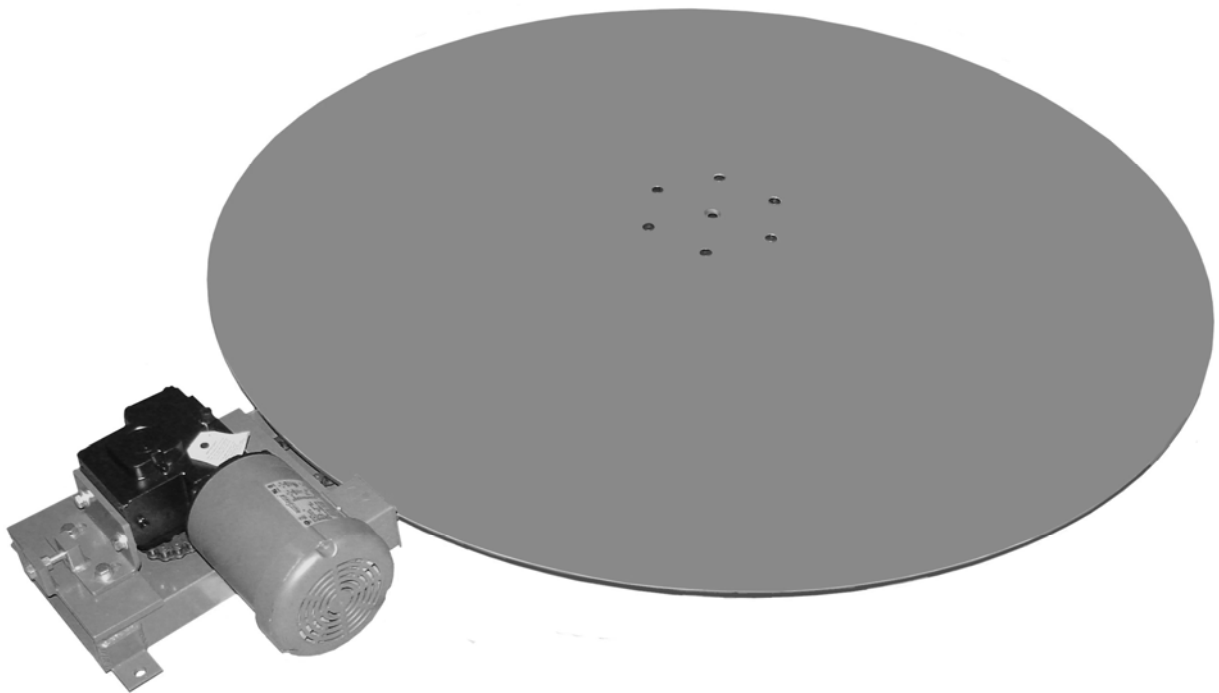
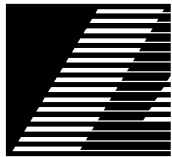


ADVANCE LIFTS

TPH & TPL TURNTABLES MANUAL



CAUTION!
THIS MANUAL IS AN IMPORTANT DOCUMENT,
IT SHOULD BE KEPT WITH THE MACHINE OR
LOCATED WHERE READILY AVAILABLE TO
OPERATOR AND MAINTENANCE PERSONNEL
FOR REFERENCE PURPOSES.



ADVANCE LIFTS

Installation, Operation and Maintenance Manual for the Following Equipment:

TPH & TPL MODEL TURNTABLES

This manual contains a non-standard electrical drawing.

In any correspondence with your distributor you will need the following information:

Model Number _____ Serial Number _____

Installation location: _____

Distributor Information: _____

Advance Lifts, Inc.
701 Kirk Road
St. Charles, IL 60174-3428
Toll Free 1-800-843-3625
Sales Fax 1-630-584-9405
Parts and Service Fax 1-630-584-6837
E-mail: Parts@advancelifts.com

*Advance Lifts, Inc. furnishes one manual with each unit. Additional manuals are available at \$25.00 each.

SECTION 2. INDEX & INTRODUCTION

Identification Sheet.....	Section 1
Index & Introduction.....	Section 2
*Responsibilities of Owners/ Users.....	Section 3
*Installation Instructions.....	Section 4
*Operation Instructions.....	Section 5
*Maintenance Instructions.....	Section 6
Warning Label Specifications & Locations	Section 7
Electrical Details.....	Section 8
Electrical schematic	
Troubleshooting Hints.....	Section 9
Warranty.....	Section 10

***Mandatory reading before attempting installation.**

SECTION 2. (CONTINUED) INTRODUCTION

Congratulations, the equipment that you have purchased is of the highest quality available. Your Advance Lift Turntable will provide you with many years of trouble free service in return for the minimal maintenance described in this manual.

Please be sure that no individual is allowed to operate the until they have been fully familiarized with the operating instructions in this manual. Also, insure that at least one person at the lift site is familiar with the maintenance section of this manual and is assigned responsibility for doing the maintenance on a regular basis.

Please note that the unit has a metal nameplate attached to it that contains information such as the model number, capacities, and serial number. Do not remove the nameplate. Be sure that no operator ever exceeds the capacities shown on the nameplate or they may cause damage to the turntable or injure personnel.

Also, be sure to have the serial number of the unit handy if you have to call your distributor. That number identifies your specific lift and will allow your distributors personnel to give you the most thorough and timely assistance possible.

This manual is under constant review and we would appreciate any constructive suggestions that may enhance its usefulness. Please send your suggestions to Advance lifts, Inc. Attn: Engineering Dept.

Thank you for purchasing our product.

SECTION 3. RESPONSIBILITIES OF OWNERS & USERS

Inspection and Maintenance: The turntable shall be inspected and maintained in proper working order in accordance with this manual and safe operating practices.

Removal from Service: Any turntable not in safe operating condition shall be removed from service until it is repaired to the original manufacturer's standards.

Repairs: Only authorized personnel in conformance with the manufacturer's instructions shall make all repairs.

Operators: Only trained and authorized personnel shall be permitted to operate the turntable. They must understand to be alert to safety hazards during all operations.

Before Operation: Before using the lift, the operator shall have:

1. Read and understood the manufacturer's operating instructions and safety rules, or been trained by a qualified person.
2. Inspected the turntable for proper operation and condition. Any suspect item shall be carefully examined and a determination made by a qualified person as to whether it constitutes a safety hazard. All unsafe items shall be corrected before further use of the turntable.

During Operations: The turntable shall be used only in accordance with its intended use and within the manufacturer's limitation and safety rules:

1. Do not overload the unit.
2. Insure that all safety devices are operational and in place.
3. Be certain that all loads are centered on the turntable platform.
4. Insure that all personnel near the turntable understand to stand back from the unit so that no body parts can be pinched by the mechanism or platform and any items that may fall off the lift will not strike them.

SECTION 4. INSTALLATION INSTRUCTIONS

1. Position the unit in the area of use. Remove all straps and packing materials from the unit.
2. Position the unit into the desired location. Locate the four (4) lag down holes on the base frame onto the mounting surface.

NOTE: Turntables must be anchored to the floor for safe operation.

3. Install lags using 5/8" x 6" Rawl Studs or equivalent to anchor.
4. Plug the unit into the correct electrical receptacle.
5. Test the unit for proper operation when the footswitch or pushbutton is depressed the turntable will rotate smoothly without any unusual noises or vibration.
6. Instruct user(s) in the proper operation of the machine safety precautions and equipment capacity. Supply maintenance personnel with this service manual.

SECTION 5. OPERATING INSTRUCTIONS, D/C UNITS

1. Turn the power switch located on the electrical control box to the "ON" position.
2. Place object to be rotated on the turntable platform making sure that it is centered.
3. Make certain that there are no obstructions around the turntable or underneath it.
4. Depress the foot pedal or pushbutton to start the turntable in motion.
5. Release the foot pedal or pushbutton when load is in desired position.

CAUTION!

When removing loads from platform be certain you are lifting the load and not the platform. Damage or injury could occur.

6. If desired the rotational speed of the turntable can be adjusted. To adjust speed, follow steps 7-9.
7. Unplug power cord to unit.
8. Adjust speed knob on electrical control box to desired percentages of maximum rotational speed. (Note: Factory setting is 100%)
9. Plug power cord back in.

WARNING!

Operators must be alert to all personnel in the vicinity of the unit and avoid any surprises to the personnel in regard to the movement of and/or the position of the unit at any time. Never operate the unit if you cannot see it and the personnel around it.

SECTION 5. OPERATING INSTRUCTIONS (Continued)

OPERATING INSTRUCTIONS, A/C UNITS

1. Turn the power switch located on the electrical control box to the "ON" position.
2. Place object to be rotated on the turntable platform making sure that it is centered.
3. Make certain that there are no obstructions around the turntable or underneath it.
4. Depress the foot pedal or pushbutton to start the turntable in motion.
5. Release the foot pedal or pushbutton when load is in desired position.
6. Speed settings are factory preset. If speed changes are required, contact the factory.

WARNING!

Operators must be alert to all personnel in the vicinity of the unit and avoid any surprises to these personnel in regard to movement of or the position of the unit at any time. never operate the unit if you cannot see it and the personnel around it.

SECTION 6. MAINTENANCE INSTRUCTIONS

NOTE: Read the entire manual before attempting any maintenance on the unit.

WARNING!

On the first use of the unit each day, each operator shall check to see that the unit is operating properly and smoothly. All safety devices should be in place and operating properly. If not, maintenance shall be contacted to determine if equipment is safe to operate.

CAUTION!

Whenever inspecting the unit or performing maintenance on the unit, be sure to follow OSHA Tagout/Lockout electrical requirements as a minimum precaution to prevent accidental movement of the unit by others.

Weekly

This unit requires no weekly maintenance aside from keeping the area around and underneath free of garbage and debris.

Semi-Annually

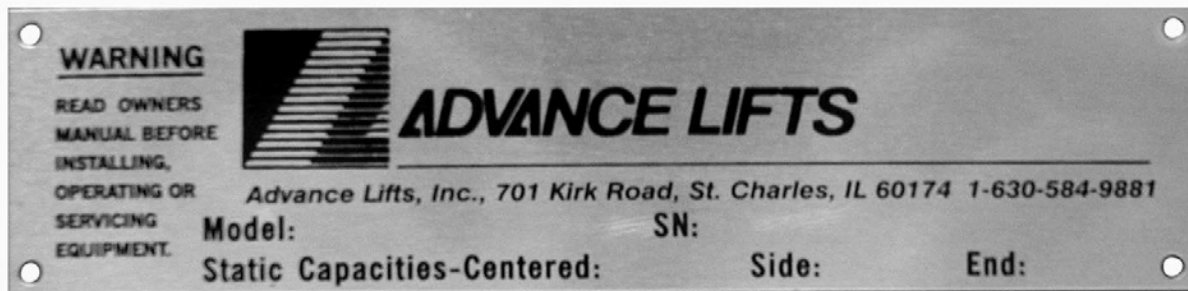
1. Once every six (6) months, the chain on the drive unit should be lubricated using any standard chain lubricant or a #2 amber grease.
2. Check the chain tension and adjust if needed.
3. Check all rollers, axles and bearing for wear and tear and schedule replacement if warranted.
4. Do not let the equipment stay in disrepair; fix little problems while they are still little or some of them may become severe quickly.

SECTION 7. WARNING LABELS

1. This is a promotional label identifying the unit as an Advance Lifts Unit.



2. This is the formal nameplate and it should never be removed from the unit. The serial number on this nameplate is critical in identifying the specific unit for correct parts and service information. This plate also informs all readers of the proper capacity limits of the unit.



3. This is a Danger label reinforcing the need to read all instructions and not put hands or feet under the turntable.

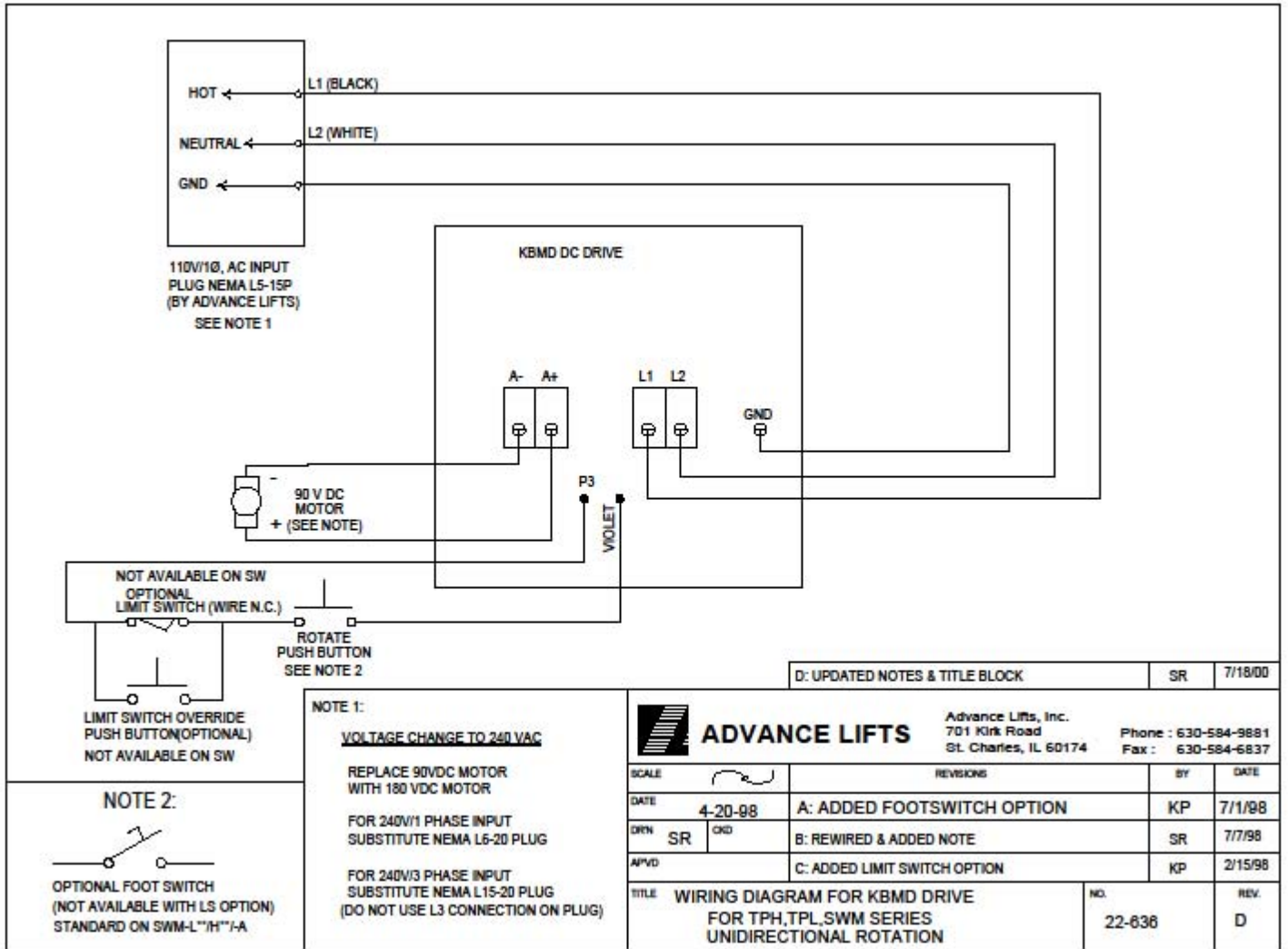


4. This is a Warning label to not stand, sit or ride on the turntable top.



SECTION 8. ELECTRICAL DETAILS

D/C SCHEMATIC



D: UPDATED NOTES & TITLE BLOCK SR 7/18/00

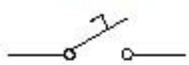
NOT AVAILABLE ON SW
OPTIONAL
LIMIT SWITCH (WIRE N.C.)

LIMIT SWITCH OVERRIDE
PUSH BUTTON (OPTIONAL)
NOT AVAILABLE ON SW


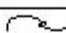
ROTATE
PUSH BUTTON
SEE NOTE 2

NOTE 1:
VOLTAGE CHANGE TO 24Ø VAC
REPLACE 90VDC MOTOR
WITH 18Ø VDC MOTOR
FOR 24ØV/1 PHASE INPUT
SUBSTITUTE NEMA L6-2Ø PLUG
FOR 24ØV/3 PHASE INPUT
SUBSTITUTE NEMA L15-2Ø PLUG
(DO NOT USE L3 CONNECTION ON PLUG)

NOTE 2:

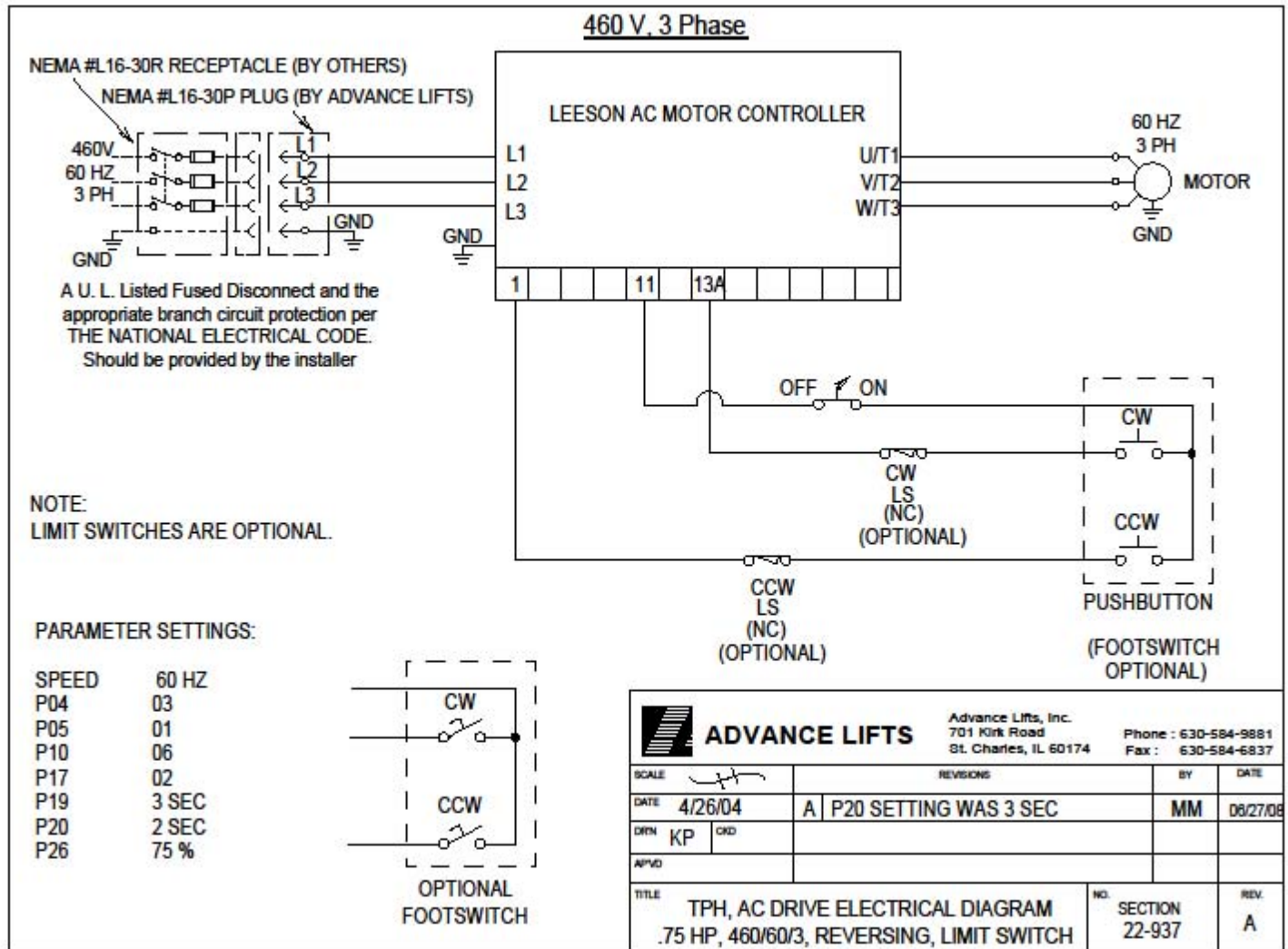


OPTIONAL FOOT SWITCH
(NOT AVAILABLE WITH LS OPTION)
STANDARD ON SWM-L"1H"-1A

		ADVANCE LIFTS		Advance Lifts, Inc. 701 Kirk Road St. Charles, IL 60174		Phone : 630-584-9881 Fax : 630-584-6837	
SCALE		REVISIONS		BY	DATE		
DATE	4-20-98	A: ADDED FOOTSWITCH OPTION		KP	7/1/98		
DRN	SR	B: REWIRED & ADDED NOTE		SR	7/7/98		
APVD		C: ADDED LIMIT SWITCH OPTION		KP	2/15/98		
TITLE WIRING DIAGRAM FOR KBMD DRIVE FOR TPH,TPL,SWM SERIES UNIDIRECTIONAL ROTATION				NO. 22-838		REV. D	

SECTION 8. ELECTRICAL DETAILS (CONTINUED)

A/C SCHEMATIC



SECTION 9. TROUBLESHOOTING

- A. Equipment does not turn, motor will not run:
 - 1. Check to make sure that the unit is plugged in and that the electrical power is on.
 - 2. Check control fuse(s). On D/C units, check armature fuse.
 - 3. Check foot switch or pushbutton and wiring for proper operation/condition.

- B. Equipment will not turn, motor runs:
 - 1. Chain on drive assembly broken or off sprockets. If chain came off because of being too loose, adjust the gear reducer base plate to tighten it.
 - 2. Gear reducer malfunction.
 - 3. Turntable or load is obstructed.

- C. Equipment turns too slowly:
 - 1. Foreign material may be lodged under the platform or in the drive mechanism.
 - 2. The load may be rubbing against an adjacent obstruction.
 - 3. Turntable speed adjustment set to low (D/C Units only).
 - 4. Load exceeding equipment ratings.

- D. Equipment does not turn rated load:
 - 1. Unit may be overloaded.
 - 2. Platform may be shifted or damaged from transit and is binding.
 - 3. Foreign material may be lodged below platform or in drive mechanism.
 - 4. Load may be hitting an adjacent obstruction.

SECTION 10. WARRANTY

For a period of one year from date of shipment from the Company's plant, the Company agrees to replace or repair, free of charge, any defective parts, material or workmanship on new equipment. This shall include electrical and hydraulic components.

For a period of ten years or 250,000 cycles (whichever occurs first) from date of shipment from Company's plant, the Company agrees to replace or repair any defective structure.

Company authorization must be obtained prior to the commencement of any work. The Company reserves the right of choice between effecting repairs in the field or paying all freight charges and effecting the repairs at the Company's plant. The Company further reserves the right of final determination in all warranty considerations. Evidence of overloading, abuse, or field modification of units without Company approval shall void this warranty. No contingent liabilities will be accepted.

Damage incurred in transport is the responsibility of the carrier and is not covered by this warranty. Any damage detected upon receipt of equipment should be immediately reported to the carrier. If you need assistance filing your claim, please contact Advance Lifts.

