

# MODEL 3360 RECESSED DOCK LIFT

**2 Year Parts & Labor/10 Year Structural Warranty**

*These are our medium sized Disappearing Dock lifts. They are sized to handle pallet jacks, powered pallet jacks, straddle stackers and small fork trucks. They are also used for dock to ground access.*

**ISO 9001:2015  
Certified**



Capacity: 10,000 lbs.  
Axle Capacity Ends: 8,000 lbs.  
Axle Capacity Sides: 5,000 lbs.  
Platform Size: 8 x 8 ft.  
Lowered Height: 12 in.  
5 HP Motor  
Approx. 8 FPM  
58" Travel  
Shipping Weight: 5,005 lb.



**Model #3360**

## SPECIAL FEATURES & BENEFITS

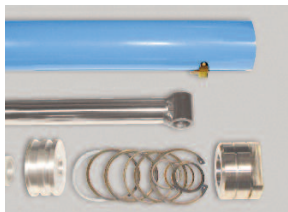
- ▶ All models are equipped with a hinged bridge with a pull back chain.
- ▶ All of the electrical controllers are Underwriters Laboratories approved assemblies.
- ▶ Each unit is washed with phosphoric acid, fully primed and then finished with baked enamel.
- ▶ All cylinders are machine grade with clear plastic return lines & internal mechanical stops.
- ▶ These units conform to all applicable ANSI codes.

**CLICK HERE FOR:** [Drawing PDF DXF](#) [Pit Diagram](#) [Specifications](#) [Optional Accessories](#)

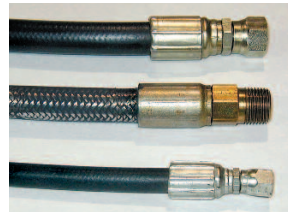
## FEATURE DETAILS



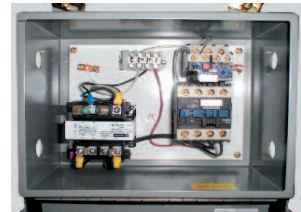
▶ **Power Unit**



▶ **Cylinder**



▶ **Double Wire  
Braid Hose**



▶ **UL Listed Control  
Panel**