

# MODEL HRDP-496-4836 HIGH REACH DUMPER

**10 Year/250,000 Cycle Warranty**

*These units have been designed for applications that require lifting a container to a high elevation and then dumping it. They safely accomplish the function of lifting and dumping in one compact unit. Applications for these units include grinders and other processing equipment with high in-feed locations. High reach dumpers can eliminate the need for long power conveyors and mezzanines serviced by lift systems.*

**ISO 9001:2015  
Certified**



5 HP Motor  
Speed: 44 seconds  
Capacity: 4,000 lbs  
Carriage Dimension: 48 x 36 in.  
Overall Dimension: 79 x 71 in.  
Carriage Height: 55 in.  
Arc Height: 162 in.  
Arc Length: 71 in.  
Shipping Weight: 2,600 lbs



**4,000 lb. Capacity - 96 in. Dump Height**

*\* Mesh Guarding Not Shown In Photos*

## SPECIAL FEATURES & BENEFITS

- ▶ Full 135 degree tilt.
- ▶ Machine grade single acting cylinder with for lifting and double acting cylinders spherical rod ends for tilting.
- ▶ Continuous duty motors.
- ▶ Controllers are Underwriter Laboratory listed assemblies.
- ▶ All bearings are lifetime lubricated.

**CLICK HERE FOR: [Optional Accessories](#)**

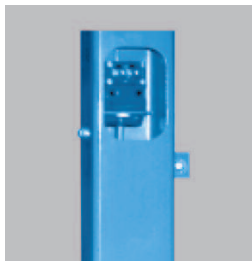
## FEATURE DETAILS



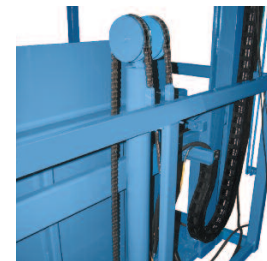
▶ **Continuous Duty Power Units.**



▶ **Optional Chutes & Soft Lips.**



▶ **Standard Electronic Eye.**



▶ **Cable Carrier Enclosures For Traveling Cylinder Hoses.**