

MODEL HDDP-448-5448 HEAVY DUTY DUMPER

10 Year/250,000 Cycle Warranty

Applications that regularly exceed (6) cycles per hour and more than (1) shift per day require heavy duty dumpers. If the items being dumped act like a sticky commodity that requires frequent jogging to maintain flow, then heavy duty dumpers are needed. These units are equipped with continuous duty motors and the robust design features extra rugged structural members. These units are ideal for tough applications.

**ISO 9001:2015
Certified**



5 HP Motor
Speed: 40 seconds
Capacity: 4,000 lbs
Carriage Dimension: 54 x 48 in.
Overall Dimension: 78 x 94 in.
Carriage Height: 67 in.
Arc Height: 128 in.
Arc Length: 90 in.
Shipping Weight: 2,100 lbs.



4,000 lb. Capacity - 48 in. Dump Height

SPECIAL FEATURES & BENEFITS

- ▶ Full 135 degree tilt.
- ▶ Machine grade double acting cylinders with spherical rod ends.
- ▶ Continuous duty motors.
- ▶ Controllers are Underwriter Laboratory listed assemblies.
- ▶ All bearings are lifetime lubricated.

CLICK HERE FOR: [Optional Accessories](#)

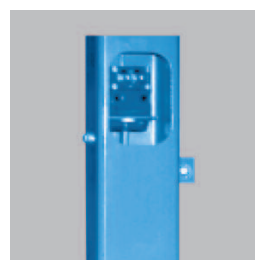
FEATURE DETAILS



▶ **Continuous Duty
Power Units.**



▶ **Optional Chutes &
Soft Lips.**



▶ **Optional
Electronic Eye.**



▶ **Adjustable
Retaining Bar.**