

# MODEL HDDP-448-4836 HEAVY DUTY DUMPER

**10 Year/250,000 Cycle Warranty**

*Applications that regularly exceed (6) cycles per hour and more than (1) shift per day require heavy duty dumpers. If the items being dumped act like a sticky commodity that requires frequent jogging to maintain flow, then heavy duty dumpers are needed. These units are equipped with continuous duty motors and the robust design features extra rugged structural members. These units are ideal for tough applications.*

**ISO 9001:2015  
Certified**



5 HP Motor  
Speed: 40 seconds  
Capacity: 4,000 lbs  
Carriage Dimension: 48 x 36 in.  
Overall Dimension: 72 x 82 in.  
Carriage Height: 67 in.  
Arc Height: 117 in.  
Arc Length: 79 in.  
Shipping Weight: 1,900 lbs.



**4,000 lb. Capacity - 48 in. Dump Height**

## SPECIAL FEATURES & BENEFITS

- ▶ Full 135 degree tilt.
- ▶ Machine grade double acting cylinders with spherical rod ends.
- ▶ Continuous duty motors.
- ▶ Controllers are Underwriter Laboratory listed assemblies.
- ▶ All bearings are lifetime lubricated.

**CLICK HERE FOR: [Optional Accessories](#)**

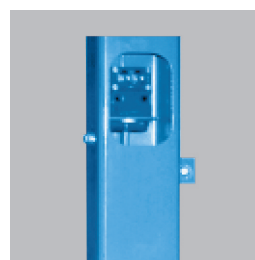
## FEATURE DETAILS



▶ **Continuous Duty  
Power Units.**



▶ **Optional Chutes &  
Soft Lips.**



▶ **Optional  
Electronic Eye.**



▶ **Adjustable  
Retaining Bar.**