

MODEL 3130 RECESSED DOCK LIFT

2 Year Parts & Labor/10 Year Structural Warranty

The 3100 series lifts are designed to fit in existing 10" deep pits. They are sized to handle pallet jacks, powered pallet jacks, and straddle stackers. They are also used for dock to ground access.

**ISO 9001:2015
Certified**



Capacity: 8,000 lbs.
 Axle Capacity Ends: 6,150 lbs.
 Axle Capacity Sides: 4,250 lbs.
 Platform Size: 7 x 8 ft.
 Lowered Height: 10 in.
 5 HP Motor
 Approx. 10 FPM
 58" Travel
 Shipping Weight: 4,500 lbs.



Model# 3130

SPECIAL FEATURES & BENEFITS

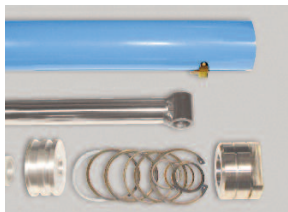
- ▶ All models are equipped with a hinged bridge with a pull back chain.
- ▶ All of the electrical controllers are Underwriters Laboratories approved assemblies.
- ▶ Each unit is washed with phosphoric acid, fully primed and then finished with baked enamel.
- ▶ All cylinders are machine grade with clear plastic return lines & internal mechanical stops.
- ▶ These units conform to all applicable ANSI codes.

CLICK HERE FOR: [Drawing PDF](#) [DXF](#) [Pit Diagram](#) [Specifications](#) [Optional Accessories](#)

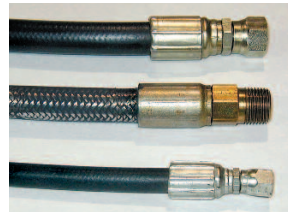
FEATURE DETAILS



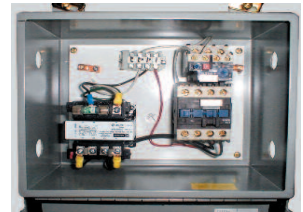
▶ **Power Unit**



▶ **Cylinder**



▶ **Double Wire
Braid Hose**



▶ **UL Listed Control
Panel**