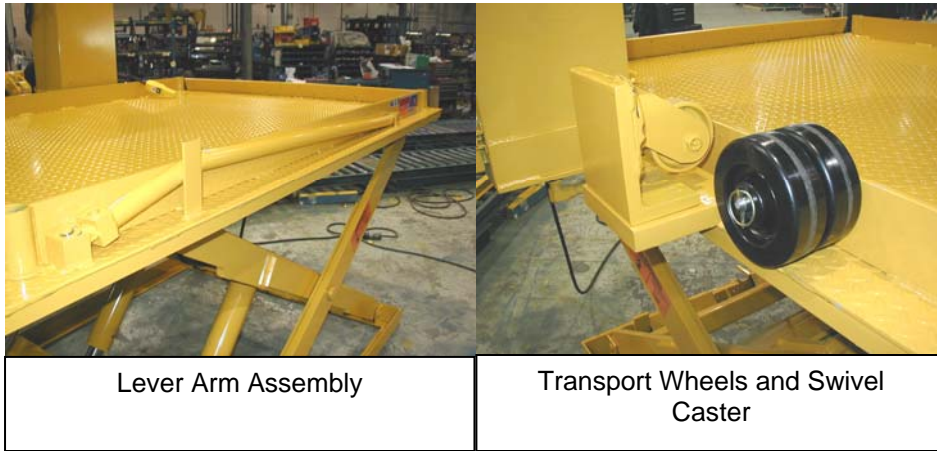


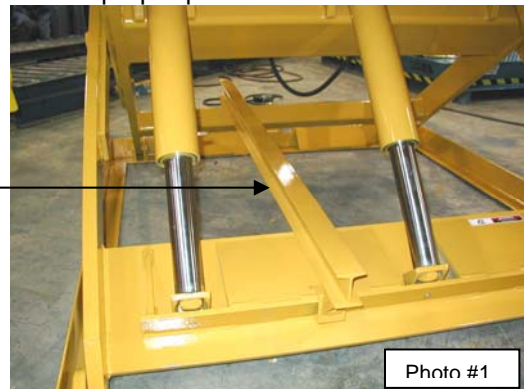
Model 6150 Portability Feature instructions

1. The unit shall only be moved on level surfaces and in an unloaded condition. **Caution!** Unit could move on it's own once transport wheels are installed in not operated on a level surface.
2. To begin the portability option, locate the items listed below.
 - a. Lever arm assembly.
 - b. Two 6" transport wheels
 - c. Swivel Caster Assembly



3. Before using the portability feature, the safety leg or maintenance bar must be installed on the unit. Photograph #1 shows the location of the maintenance bar. **Danger!** Refer to section 6 in your owner's manual for instructions and proper procedure.

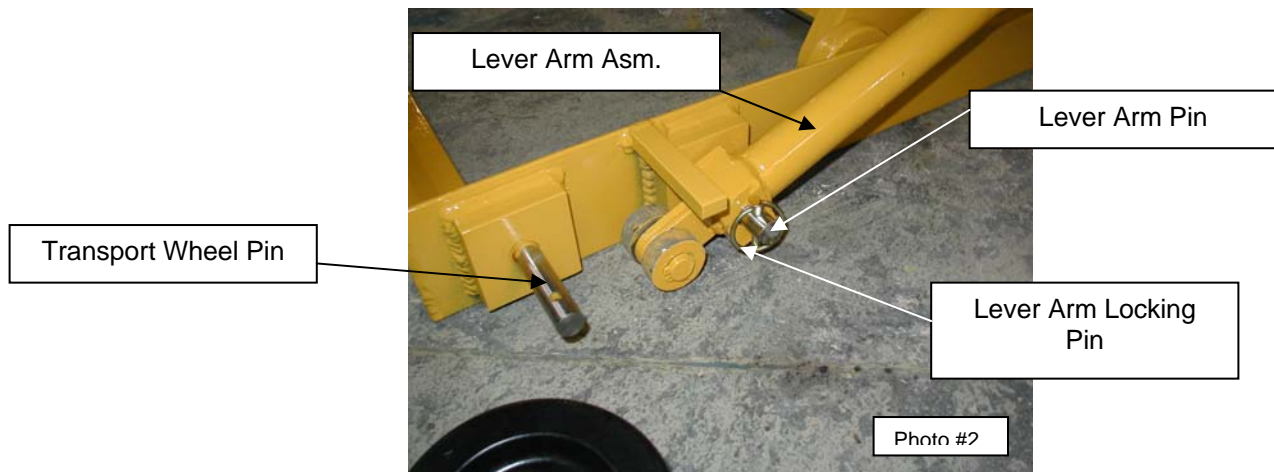
Unit shown with safety maintenance bar in place. Refer to Section 6 in the owner's manual for complete details.



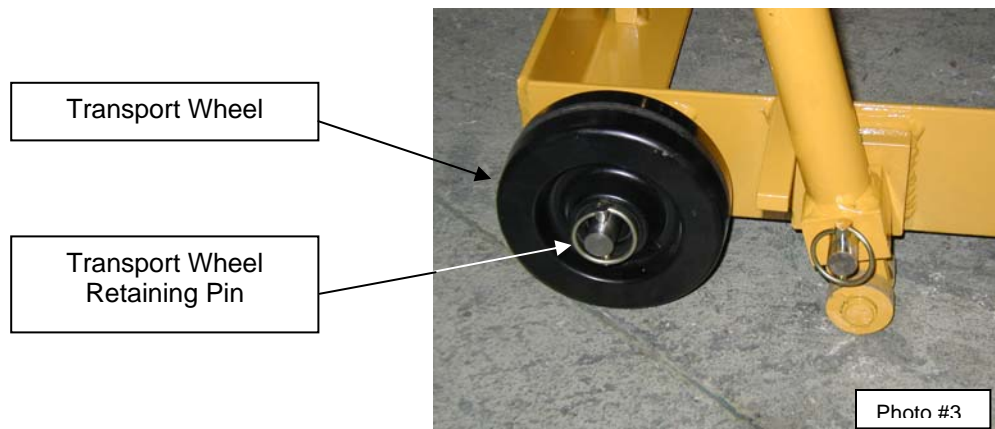
4. When engaging the transport feature it is important to secure or block the unit in a manner that will not allow the unit to move or shift when engaging.

5. Setting up the unit for transport.

- A. Install the transport wheels first by placing the lever arm assembly on the mounting pin as shown in photograph #2.

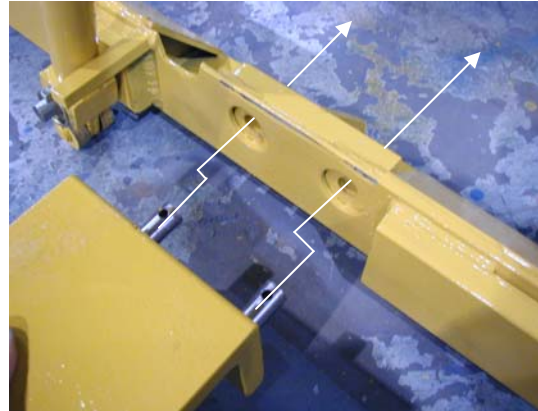
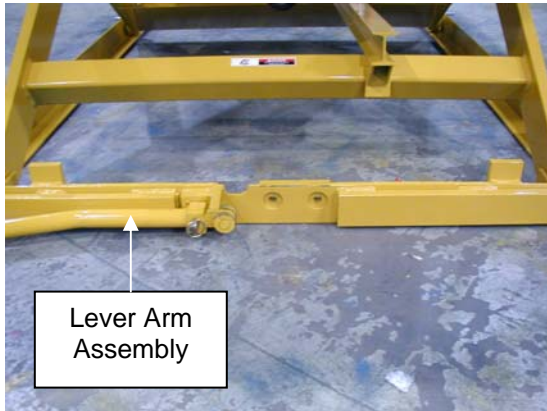


- B. Rotate the lever arm assembly upward to lift the unit. Once the unit has been elevated, install the transport wheel on the pin and lock in place with the locking pin as shown in photograph # 3.



- C. Rotate the lever arm assembly in the opposite direction to lower the unit onto the transport wheel. Once the lever arm assembly is resting on the ground, remove the locking pin and repeat the process on the other side of the unit.

- D. To install the Swivel Caster Assembly, refer to photograph #, begin by installing the lever arm assembly in the same manner as the transport wheels. Rotate the lever arm upward to lift the unit and enable the insertion of the swivel caster assembly. Secure the swivel caster assembly with the locking pins and then remove the lever arm assembly. When the blocking mentioned in paragraph 3 is removed the unit is ready for transport.



6. Before operating the unit at the new location, the portability items **must** be removed or damage to the equipment will occur. With the safety maintenance bar installed the unit properly “blocked” so no movement can occur, remove the caster wheels by reversing the installation instructions outlined in section A through D.
7. Remove the safety maintenance bar and the unit is ready for operation.