

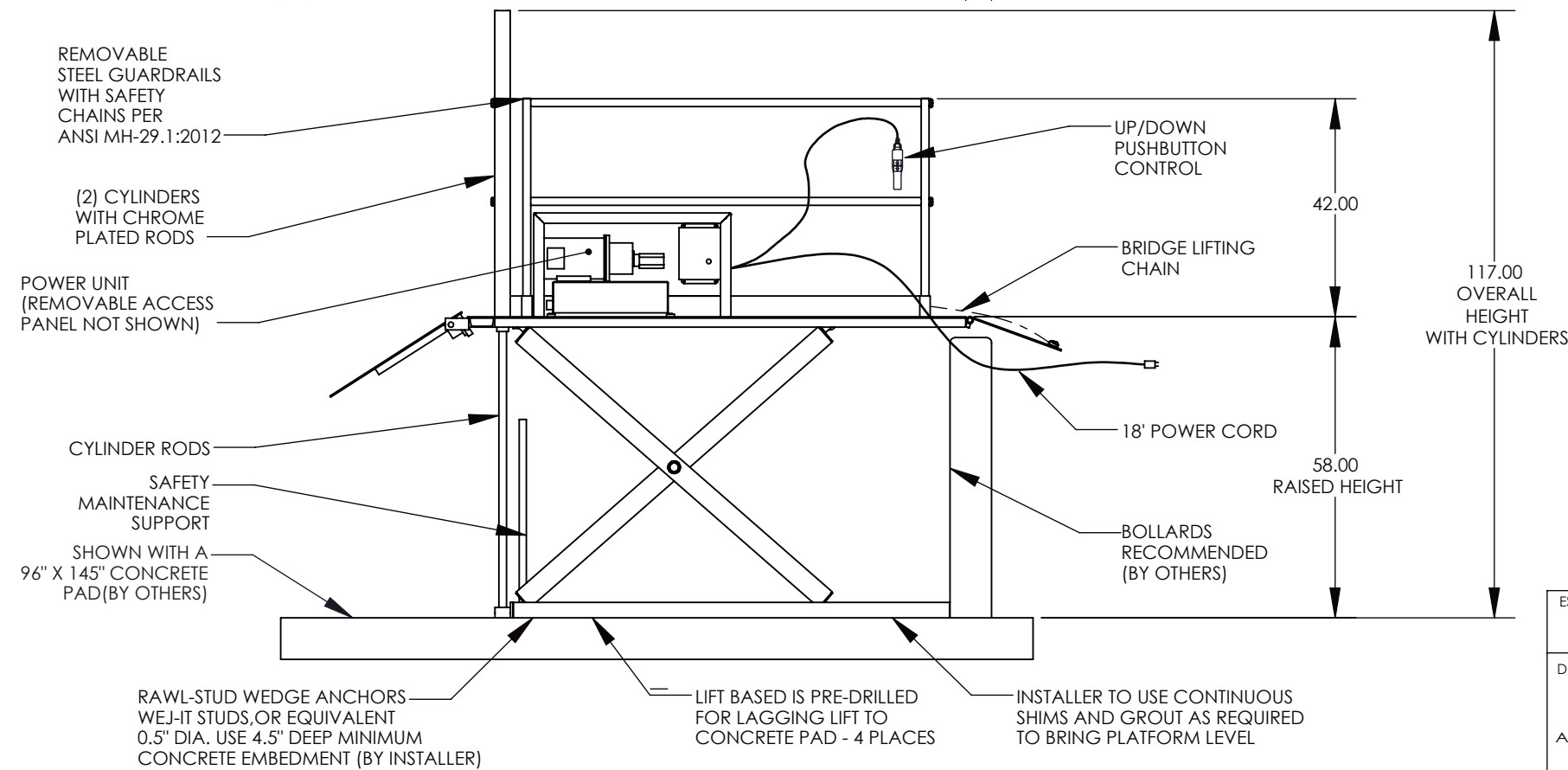
**GENERAL NOTES:**

1. ALL AXLES AND SHAFTS ARE CHROME PLATED.
2. ALL ROLLERS AND PIVOT POINTS ARE EQUIPPED WITH TEFLON SELF-LUBRICATING BEARINGS.
3. 3" VERTICAL AND 4" HORIZONTAL TOE CLEARANCE SIDES.
4. ADVANCE LIFTS, INC. TO SUPPLY:  
 -(1) PREWIRED 18' LG. POWER CORD (FROM LIFT BASE TO PLUG).
5. FINISH: BLUE PAINT

**SPECIFICATIONS:**

- CAPACITY : 5,500 LBS MAX. LIFTING CAPACITY  
 2,750 LBS MAX. AXLE CAPACITY ENDS
- PLATFORM : 72" X 96" SAFETY TREAD DECK  
 REMOVABLE GUARDRAILS - STEEL  
 18" X 60" STEEL HINGED BRIDGE WITH CHAIN  
 30" X 60" CHOCK RAMP- STEEL  
 61.5" BETWEEN HANDRAILS (PLATFORM WIDTH)  
 SAFETY CHAINS
- SPEED : 13 FPM
- TRAVEL : 53" ( FROM A 5" LOWERED HEIGHT )
- LOWERED HEIGHT : 5"
- POWER UNIT : 5 HP MOTOR, 230V 60Hz 3PH  
 SELF CONTAINED AND PRE-WIRED
- CONTROLS : UP-DOWN WEATHER-PROOF PUSHBUTTON STATION  
 ON CORD, PENDANT TYPE NEMA 1, 3, 3R, 4, 4X.
- IN NEMA 12 ENCLOSURE : MAGNETIC STARTER, W/ OVERLOAD  
 230V TO 24 V CONTROL TRANSFORMER.
- VOLTAGE: 230V / 3PH  
 ADVANCE TO SUPPLY NEMA L15-20P PLUG  
 CUSTOMER TO SUPPLY: NEMA L15-20R RECEPTACLE
- APPROXIMATE SHIPPING WEIGHT: #2,290
- ALL DIMENSIONS ARE GIVEN IN INCHES UNLESS OTHERWISE NOTED.

DIMENSIONS ARE GIVEN IN INCHES UNLESS NOTED OTHERWISE  
 DO NOT SCALE DRAWING



<b>ADVANCE LIFTS</b> Advance Lifts, Inc. 701 S. Kirk Road St. Charles, IL 60174 Phone : 630-584-9881 Fax : 630-584-6837		REVISIONS		BY	DATE
		SCALE NTS			
EST. WEIGHT (LBS.) <b>2290</b>	DATE XX/XX/XX	X	X	X	X
DEFAULT TOLERANCES: .XX ±.063" .XXX ±.031" ANGULAR ±1° UNLESS OTHERWISE SPECIFIED	DR'N XXX				
DESC. INSTANT DOCK MODEL 6568					
					DWG. B-
					REV.

RAWL-STUD WEDGE ANCHORS WEJ-IT STUDS, OR EQUIVALENT 0.5" DIA. USE 4.5" DEEP MINIMUM CONCRETE EMBEDMENT (BY INSTALLER)

LIFT BASE IS PRE-DRILLED FOR LAGGING LIFT TO CONCRETE PAD - 4 PLACES

INSTALLER TO USE CONTINUOUS SHIMS AND GROUT AS REQUIRED TO BRING PLATFORM LEVEL