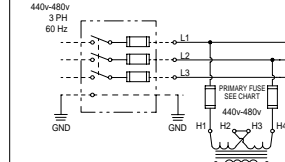
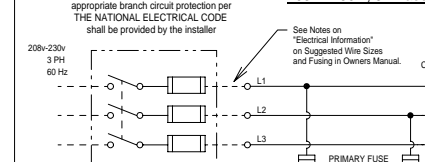


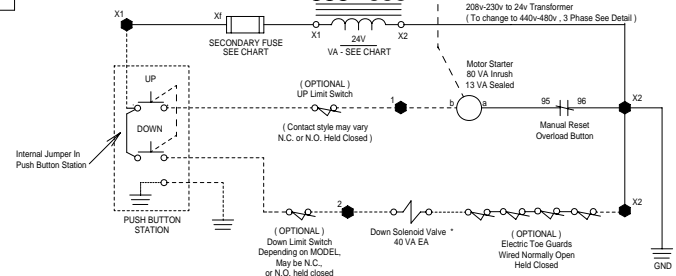
**440v - 480v, 3 Phase, Change DETAIL**



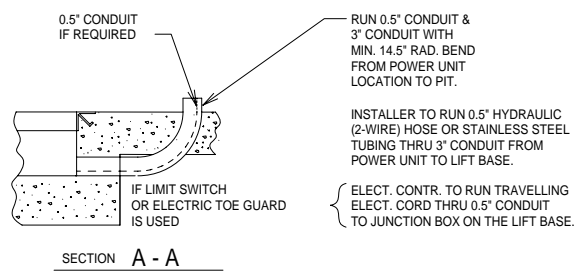
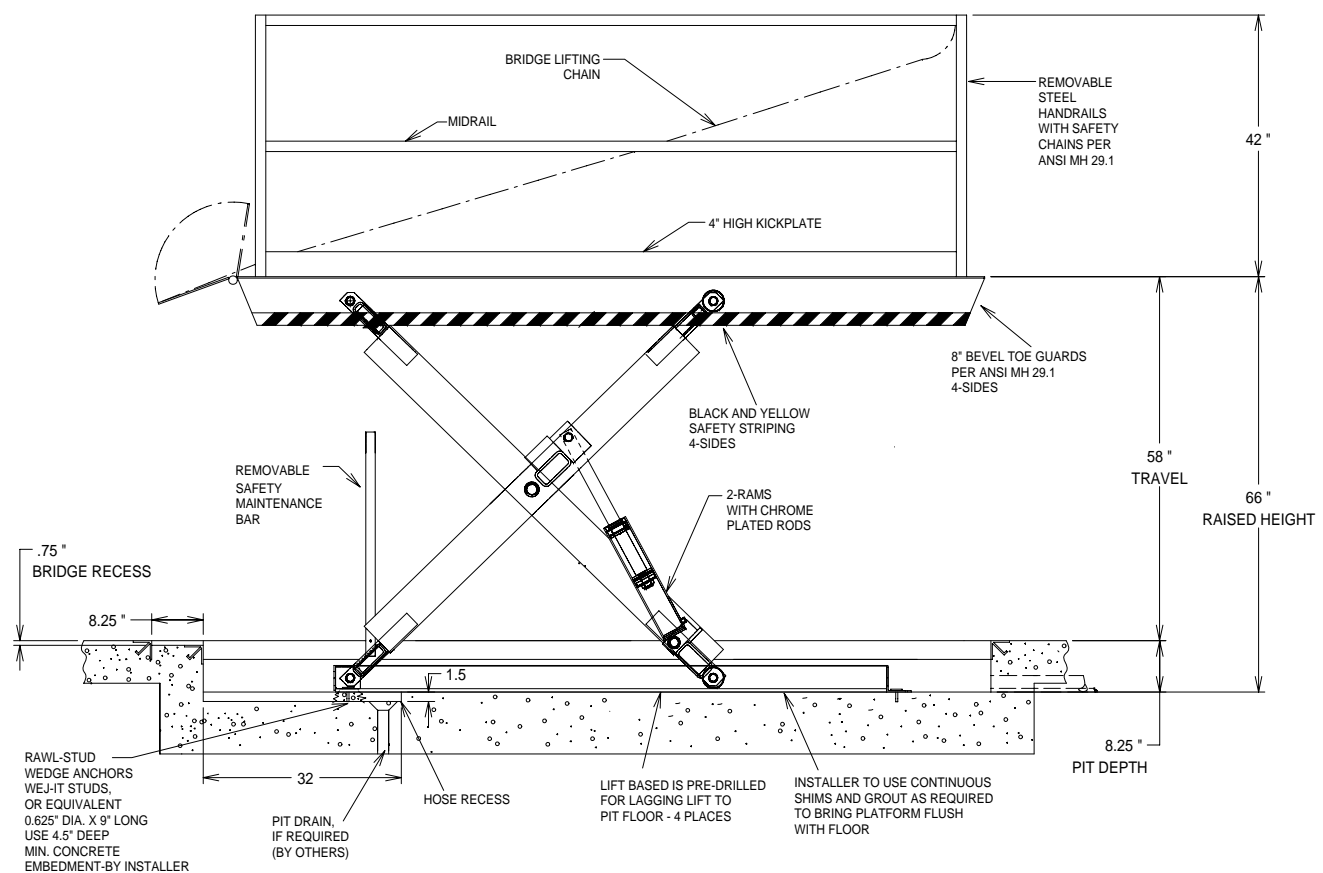
**208v - 230v, 3 Phase**



- DENOTES CONNECTION BLOCK LABELING IN ADVANCE MOTOR CONTROLLER.
- DENOTES CONTRACTOR WIRING.
- UNITS WITH (2) DOWN SOLENOIDS, ALL OTHER UNITS LISTED HAVE (1).



HP	MOTOR R.P.M.	FULL LOAD AMPERAGE (208v-230v / 480v)	TRANSFORMER SIZE	PRIMARY FUSE SIZE (208v-230v/480v)	SECONDARY FUSE SIZE
5	1725	14.8-14 / 7	50 VA	KLDR 1xKLDR 12	FNM 3 2/10



- GENERAL NOTES:**
- ALL AXLES AND SHAFTS ARE CHROME PLATED.
  - ALL ROLLERS AND PIVOT POINTS ARE EQUIPPED WITH TEFLON SELF-LUBRICATING BEARINGS.
  - ADVANCE LIFTS, INC. TO SUPPLY 5 GALLONS OF A MULTI VISCOSITY ISO-46 GROUP II BASE OIL & (1) 20' .5" EXTRA HEAVY DOUBLE WIRE BRAID HOSE (SAE 100R2) FOR THE POWER UNIT TO THE EQUIPMENT CONNECTION WITH .5" JIC FEMALE SWIVEL FITTINGS ON THE ENDS.
  - REINFORCE CONCRETE TO SUIT LOCAL SOIL CONDITIONS PLUS YOUR DESIRED SAFETY FACTORS.
  - OVERALL POWER UNIT SIZE: 26" WIDE X 12" LONG X 15" HIGH (INCLUDING MOTOR, AND BRACKETS FOR FLOOR MOUNTING).
  - CONCRETE WORK, REINFORCING, BUILDING MODIFICATIONS, PIPING, ELECTRICAL WIRING, EMBEDDED ITEMS, INSTALLATION, ETC. (BY OTHERS)
  - ADVANCE LIFTS, INC. TO SUPPLY:
    - (1) 20' LG. PUSHBUTTON COILCORD.
    - 20' FEET OF .25" I.D. HYDRAULIC HOSE WITH .25" FEMALE JIC SWIVEL FITTINGS ON THE ENDS FOR THE VENT LINE CONNECTION FROM THE BASEFRAME TO THE POWER UNIT.
    - INSTALLATION PACKAGE AS OUTLINED IN GENERAL NOTE #3.
  - FINISH: BLUE PAINT
  - PIT DIMENSION TOLERANCES ARE PLUS .25", MINUS 0" (+ .25", - 0").

- SPECIFICATIONS:**
- CAPACITY : 5,500 LBS MAX. LIFTING CAPACITY  
2,500 LBS MAX. AXLE CAPACITY ENDS  
3,000 LBS MAX. AXLE CAPACITY SIDES
- PLATFORM : 72" WIDE X 120" LONG  
SAFETY TREAD DECK  
REMOVABLE HANDRAILS - STEEL  
BRIDGE: 12" LONG X 72" WIDE,  
SOLID STEEL BRIDGE  
ALL WITH CHAINS  
BEVEL TOE GUARDS  
SAFETY STRIPING
- SPEED : 10 FPM
- TRAVEL : 58" (FROM A 8" LOWERED HEIGHT)
- LOWERED HEIGHT : 8"
- POWER UNIT : 5 HP MOTOR 230 V 60 Hz 3PH  
(REMOTE FROM LIFT)
- CONTROL : UP-DOWN WEATHER-PROOF PUSHBUTTON STATION, PENDANT TYPE NEMA 1, 3, 3R, 4, 4X.
- IN NEMA 12 ENCLOSURE : MAGNETIC STARTER, W/ OVERLOAD  
230 V TO 24 V CONTROL TRANSFORMER,
- APPROXIMATE SHIPPING WEIGHT: 2,860 LBS
- ALL DIMENSIONS ARE IN INCHES UNLESS OTHERWISE NOTED.

Advance Lifts, Inc. 701 S. Kirk Rd.  
St. Charles, IL 60174  
Phone: 630-584-9881 Fax: 630-584-9405

**ADVANCE LIFTS**

JOB NAME: \_\_\_\_\_

JOB NUMBER: \_\_\_\_\_

SCALE	N.T.S.	REVISIONS	BY	DATE
DATE				
DRN	CKD			
APVD				

TITLE: SUPERDOK SERIES T-55610

NO. D- REV.