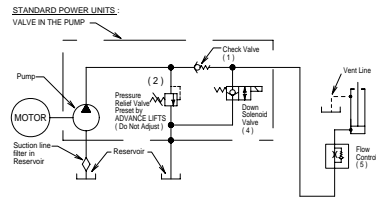
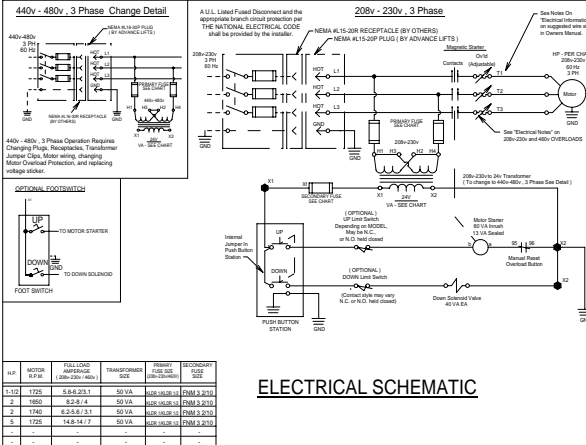


STANDARD POWER UNIT



HYDRAULIC SCHEMATIC



ELECTRICAL SCHEMATIC

GENERAL NOTES:

1. ALL AXLES AND SHAFTS ARE CHROME PLATED.
2. ALL ROLLERS AND PIVOT POINTS ARE EQUIPPED WITH TEFLON SELF-LUBRICATING BEARINGS.
3. POWER UNIT EQUIPPED WITH ONE PIECE 'ADVANCE FLOW' VALVE MANIFOLD.
4. ADVANCE LIFTS TO FURNISH RESERVOIR FILLED WITH AN ISO-46 GROUP II BASE OIL.
5. ADVANCE LIFTS TO SUPPLY (1) 60' LG. PUSHBUTTON CORD AND (1) 60' LG. POWER CORD.
6. INTERCONNECTING WIRING IS BY ADVANCE LIFTS.
7. ADVANCE LIFTS TO SUPPLY POWER UNIT WITH A PRE-WIRED PLUG.

SPECIFICATIONS:

CAPACITY:	2,500	LBS MAX. LIFTING
	2,500	LBS MAX. CAPACITY ENDS LAGGED DOWN UNIT
	2,500	LBS MAX. CAPACITY SIDES LAGGED DOWN UNIT

PLATFORM : 24" X 48" TO 48" X 72" PLATFORM SIZE

SPEED : 11 SEC. (UP)

TRAVEL : 36" (FROM A 6.5" LOWERED HEIGHT)

LOWERED HEIGHT : 6.5"

POWER UNIT : 2 HP MOTOR 230 V OR 460 V 60 HZ 3 PH
HIGH PRESSURE PUMP, HYDRAULIC VALVE
MANIFOLD, RESERVOIR AND ELECTRICAL
CONTROL (INTERNAL AND PREWIRED)

CONTROL : UP-DOWN WEATHER-PROOF PUSHBUTTON
STATION, PENDANT TYPE NEMA 1, 3, 3R, 4, 4X.

IN NEMA 1 ENCLOSURE ; MAGNETIC STARTER, WITH THERMAL
OVERLOADS, 230 V TO 24 V CONTROL
TRANSFORMER, 24V-4AMP FUSED CONTROL
CIRCUIT.

RECEPTACLE : NEMA 1-15-20R (BY CUSTOMER)

APPROX. SHIPPING WEIGHT: #600

DO NOT SCALE DRAWING

ADVANCE LIFTS		Advance Lifts, Inc. 701 KVA Rd. St. Charles, IL 60174 Phone: 630.584.9881 Fax: 630.584.9405	
JOB NUMBER	X	DATE	
SCALE	1" = 1'-0"	BY	DHS
DATE	X		
REV	X		
BY			
TITLE	PRODUCTION LIFT QUANTUM P2536		REV.