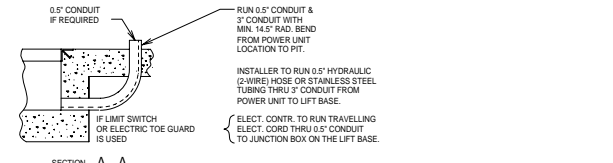
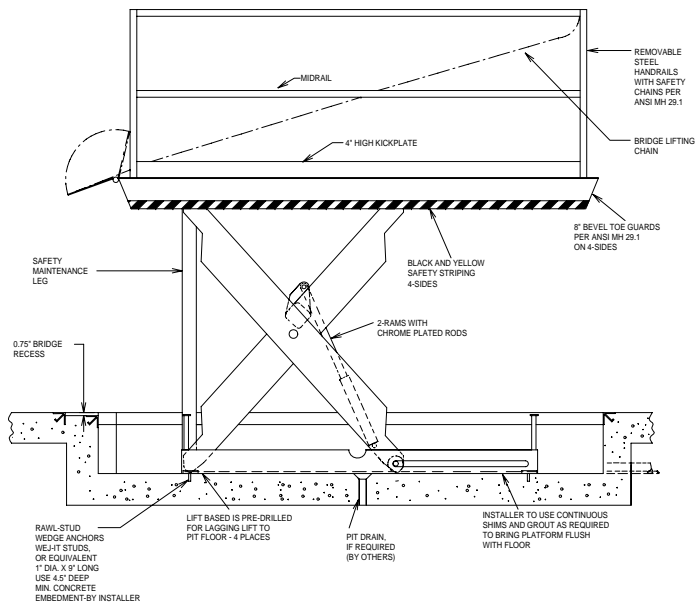


- GENERAL NOTES:**
- ALL AXLES AND SHAFTS ARE CHROME PLATED.
  - ALL ROLLERS AND PIVOT POINTS ARE EQUIPPED WITH TEFLON SELF-LUBRICATING BEARINGS.
  - INSTALLER TO FURNISH APPROX. 10 GALLONS OF A MULTI-VISCOITY ISO-46 GROUP II BASE OIL & 5' EXTRA HEAVY, DOUBLE WIRE BRAID HOSE (SAE 100R2A) OR EXTRA HEAVY SEAMLESS PIPING FROM THE POWER UNIT TO THE EQUIPMENT WITH 5" JIC FEMALE FITTING ON THE ENDS.
  - REINFORCE CONCRETE TO SUIT LOCAL SOIL CONDITIONS PLUS YOUR DESIRED SAFETY FACTORS.
  - OVERALL POWER UNIT SIZE: 26" WIDE X 22" LONG X 21" HIGH (INCLUDING MOTOR, AND BRACKETS FOR WALL MOUNTING).
  - CONCRETE WORK, REINFORCING, BUILDING MODIFICATIONS, RESERVOIR FLUID, PIPING, ELECTRICAL WIRING, IMBEDDED ITEMS, INSTALLATION, ETC. (BY OTHERS)
  - ADVANCE LIFTS, INC. TO SUPPLY:
    - (1) 20' LG. PUSHBUTTON CORD.
    - 20' LENGTH OF 25 O.D. CLEAR POLYURETHANE TUBING FOR THE VENT LINES.
  - FINISH: BLUE PAINT
  - PIT DIMENSION TOLERANCES ARE PLUS .25", MINUS 0" (+.25", -0").

- SPECIFICATIONS:**
- CAPACITY: 10,000 LBS MAX. LIFTING CAPACITY  
7,500 LBS MAX. AXLE CAPACITY ENDS  
5,000 LBS MAX. AXLE CAPACITY SIDES
- PLATFORM: 84" X 120".  
SAFETY TREAD DECK.  
REMOVABLE HANDRAILS - STEEL  
12" X 72" STEEL BRIDGE WITH CHAIN  
BEVEL TOE GUARDS  
SAFETY STRIPING
- SPEED: 8 FPM
- TRAVEL: 58" (FROM A 15" LOWERED HEIGHT)
- LOWERED HEIGHT: 15"
- POWER UNIT: 5 HP MOTOR 230 V 60 HZ 3PH  
(REMOTE FROM LIFT)
- CONTROL: UP-DOWN WEATHER-PROOF PUSHBUTTON  
STATION, PENDANT TYPE NEMA 1, 3, 3R, 4, 4X.

IN NEMA 12 ENCLOSURE : MAGNETIC STARTER, W/ OVERLOAD  
230 V TO 24 V CONTROL TRANSFORMER.

APPROXIMATE SHIPPING WEIGHT: #5,185



ADVANCE LIFTS  
Job Number: X  
Scale: X  
Date: X  
Rev: X  
Title: SUPERDOK MODEL 3350  
Rev: D