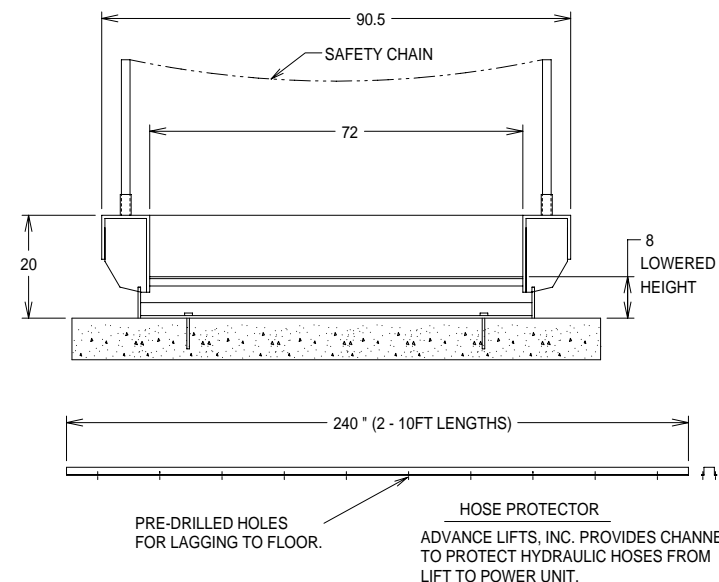
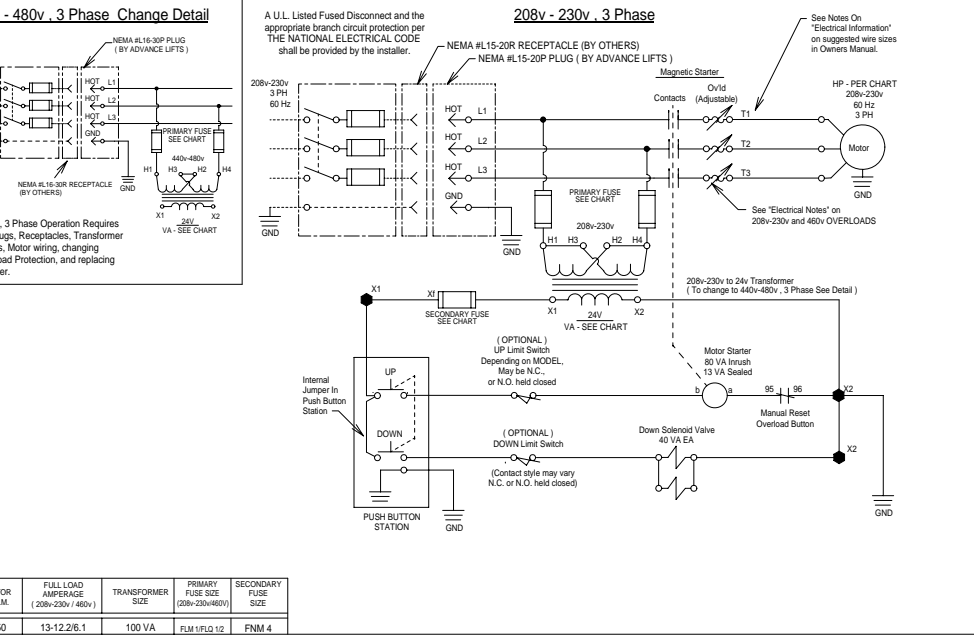
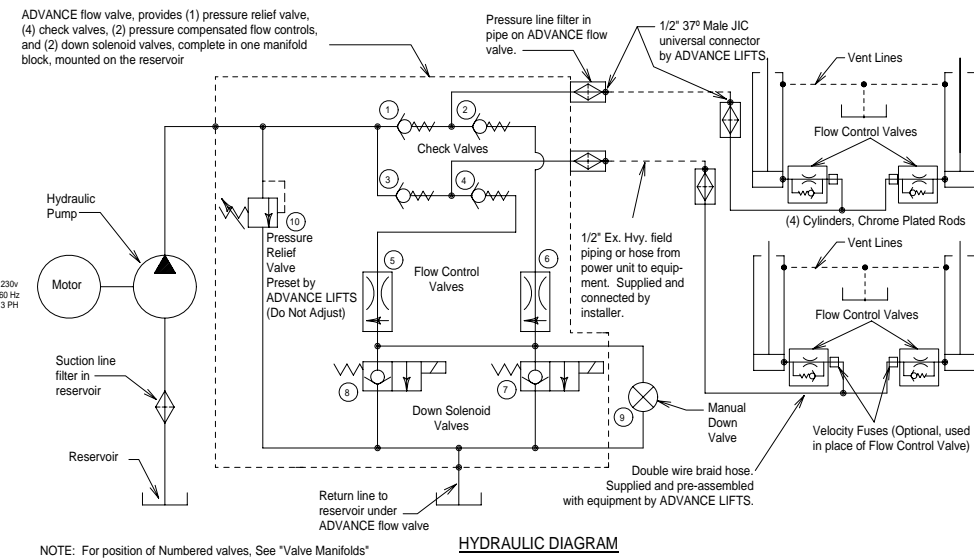
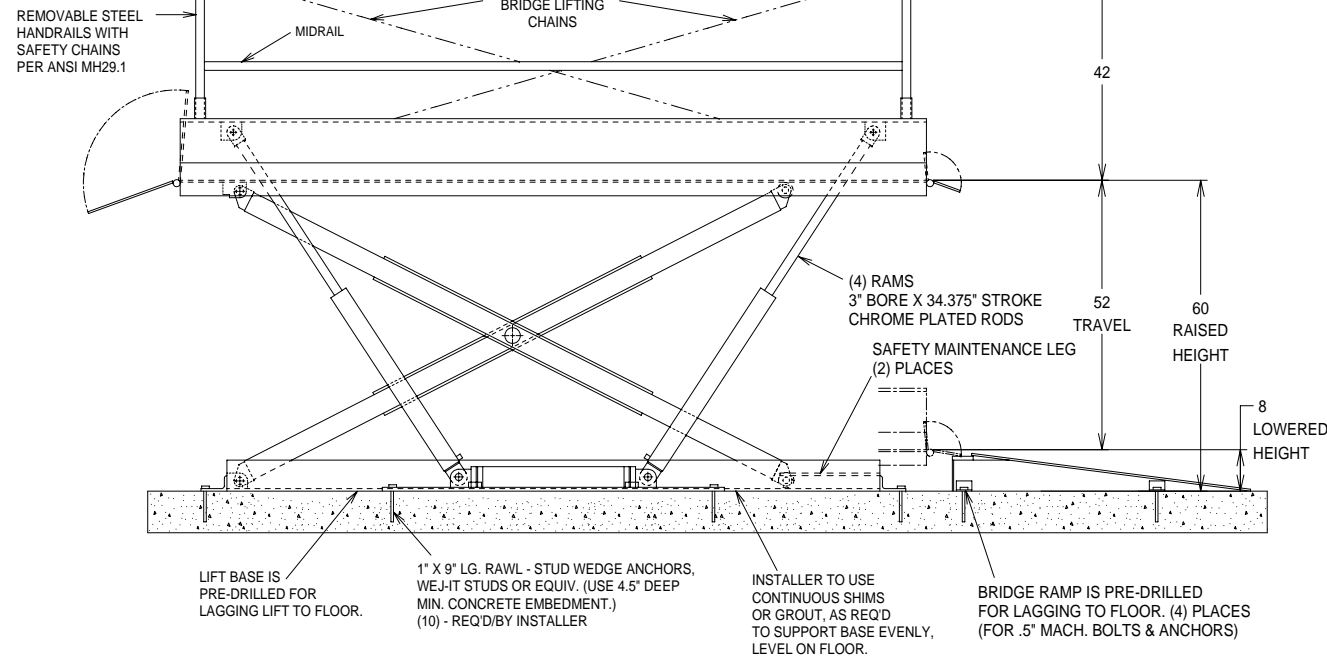
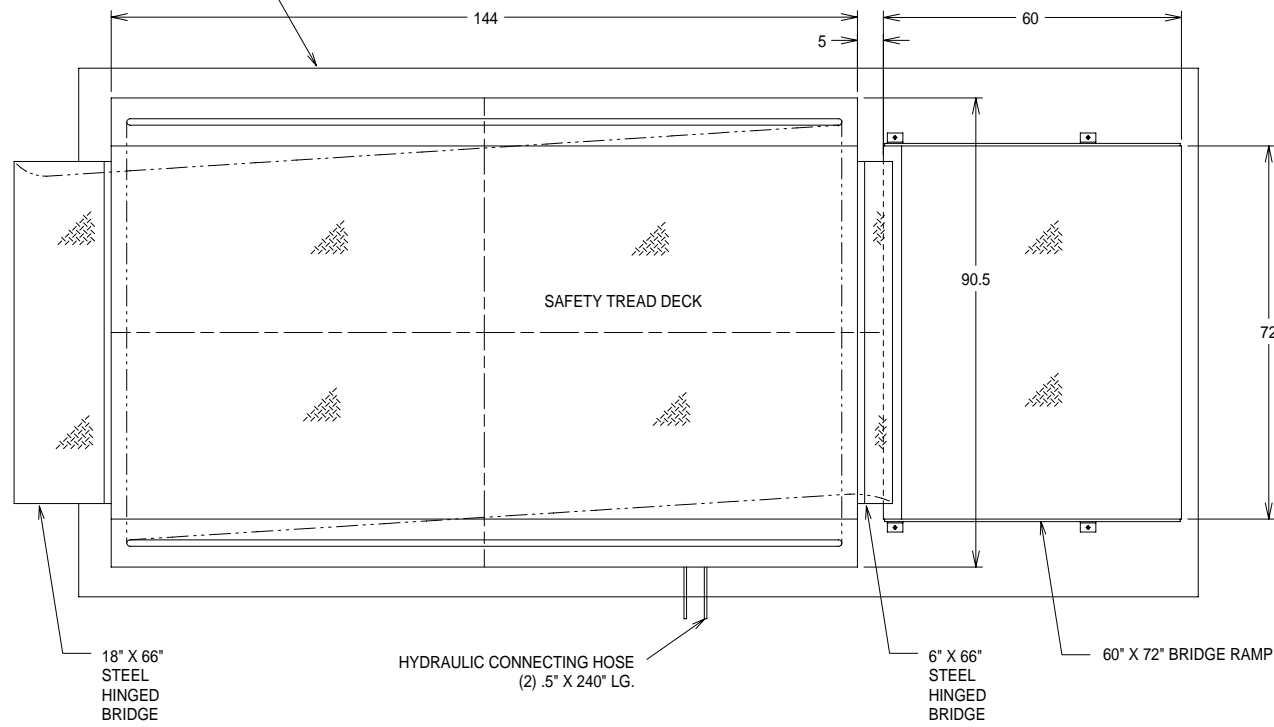


LIFT SHOWN WITH AN 18FT X 8-1/2FT CONCRETE PAD FOR REFERENCE



- SPECIFICATIONS :**
- CAPACITY : 12,000 LB. MAX. (LIFTING)  
9,600 LB. MAX. (END LOAD)
  - PLATFORM : 72" X 144"  
SAFETY TREAD SURFACES  
REMOVABLE HANDRAILS - STEEL  
18" X 66" STEEL BRIDGE WITH CHAIN  
6" X 66" STEEL RAMP TRANSITION BRIDGE  
SAFETY MAINTENANCE LEG  
60" X 72" FIXED STEEL RAMP
  - SPEED : 10 FPM
  - TRAVEL : 52"
  - LOWERED HEIGHT : 8"
  - POWER UNIT : REMOTE FROM LIFT,  
5 HP MOTOR  
230 V 60 HZ 3 PH
  - CONTROL : UP-DOWN, WEATHERPROOF  
PUSHBUTTON STATION,  
(PENDANT TYPE NEMA 1, 3, 3R, 4, 4X.)
  - IN NEMA 12 ENCLOSURE MAGNETIC STARTER  
24V CONTROL TRANSFORMER

- NOTES :**
- STANDARD NEMA ENCLOSURES.
  - SUPPLIED BY ADVANCE LIFTS, INC. :  
- MOTOR  
- PUSHBUTTONS  
- DOWN SOLENOIDS  
- MAGNETIC STARTER  
- TRANSFORMER.

	HUBBELL PLUG	HUBBELL RECEPTACLE
230V 3PH	#2421 OR NEMA L15-20P	#2420 OR NEMA L15-20R
460V 3PH	#2731 OR NEMA L16-30P	#2730 OR NEMA L16-30R

- SUPPLIED BY ADVANCE LIFTS, INC.      SUPPLIED BY CUSTOMER
- INTERCONNECTING WIRING IS BY ADVANCE LIFTS, INC.
  - ADVANCE LIFTS, INC. TO SUPPLY:  
- (1) 5 FT LG. POWER CORD WITH PLUG ATTACHED (FROM POWER UNIT TO PLUG).  
- (1) 20 FT LG. PUSHBUTTON COIL CORD.  
- (2) 20 FT LG. HYDRAULIC HOSES FOR POWER UNIT TO LIFT CONNECTION.  
- (2) 10 FT LENGTHS OF CHANNEL TO PROTECT THE HYDRAULIC HOSES EXTENDING FROM THE LIFT TO THE POWER UNIT.  
- (2) 20 FT LENGTH OF .25 OD CLEAR POLYURETHANE TUBING FOR THE VENT LINES.
  - OVERALL POWER UNIT SIZE:  
21" W X 27" L X 33" H (INCLUDING MOTOR) WITH BRACKETS FOR WALL MOUNTING.
  - INSTALLER TO FURNISH APPROX. 14 GAL OF A MULTI VISCOSITY ISO-46 GROUP II BASE OIL.
  - PAINT FINISH: BLUE PAINT
  - APPROX SHIPPING WEIGHT: 7,900 LB

DO NOT SCALE DRAWING

ALL DIMENSIONS ARE IN INCHES UNLESS OTHERWISE NOTED.

ADVANCE LIFTS  
Advance Lifts, Inc. 701 S. Kirk Rd.  
St. Charles, IL 60174  
Phone: 630-584-9881 Fax: 630-584-9405

JOB NAME: X

JOB NUMBER: X

SCALE: X

DATE: X

DRN: X

APVD: X

TITLE: SUPERDOK MODEL 6300

NO. D-

REV.