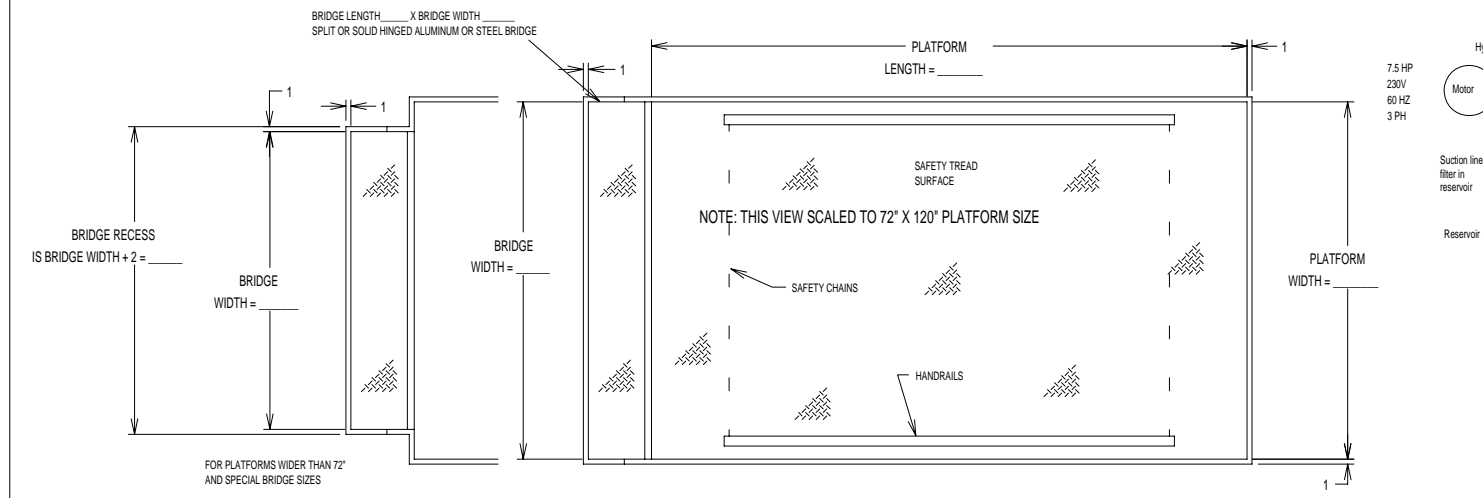


TABLE B

BRIDGE SIZES:

THE STANDARD BRIDGE IS 12' X 72" SOLID STEEL. MAXIMUM BRIDGE SIZES ARE AS FOLLOWS:

ONE - PIECE STEEL - 12' X 72'
 SPLIT STEEL - 24' X 72'
 ONE - PIECE ALUMINUM - 24' X 72'
 SPLIT ALUMINUM - 24' X 72'



- GENERAL NOTES:**
- ALL AXLES AND SHAFTS ARE CHROME PLATED.
 - ALL ROLLERS AND PIVOT POINTS ARE EQUIPPED WITH TEFLON SELF-LUBRICATING BEARINGS.
 - POWER UNIT EQUIPPED WITH ONE PIECE "ADVANCE FLOW" VALVE MANIFOLD.
 - INSTALLER TO FURNISH APPROX. 14 GALLONS OF DEXRON III AUTOMATIC TRANSMISSION FLUID.
 - REINFORCE CONCRETE TO SUIT LOCAL SOIL CONDITIONS PLUS YOUR DESIRED SAFETY FACTORS.
 - OVERALL POWER UNIT SIZE: 26" WIDE X 22" LONG X 21" HIGH (INCLUDING MOTOR, AND BRACKETS FOR WALL MOUNTING).
 - CONCRETE WORK, REINFORCING, BUILDING MODIFICATIONS, PIPING, RESERVOIR FLUID, ELECTRICAL WIRING, IMBEDDED ITEMS, INSTALLATION, ETC. (BY OTHERS)
 - ADVANCE LIFTS, INC. TO SUPPLY (1) 20' LG. PUSHBUTTON COIL CORD.

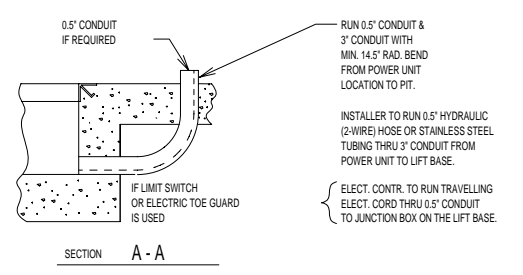
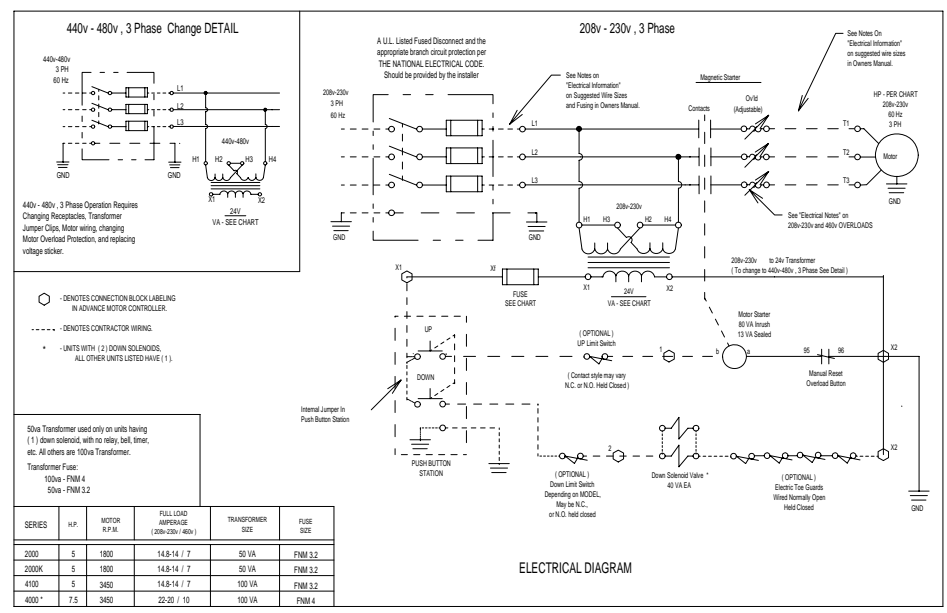
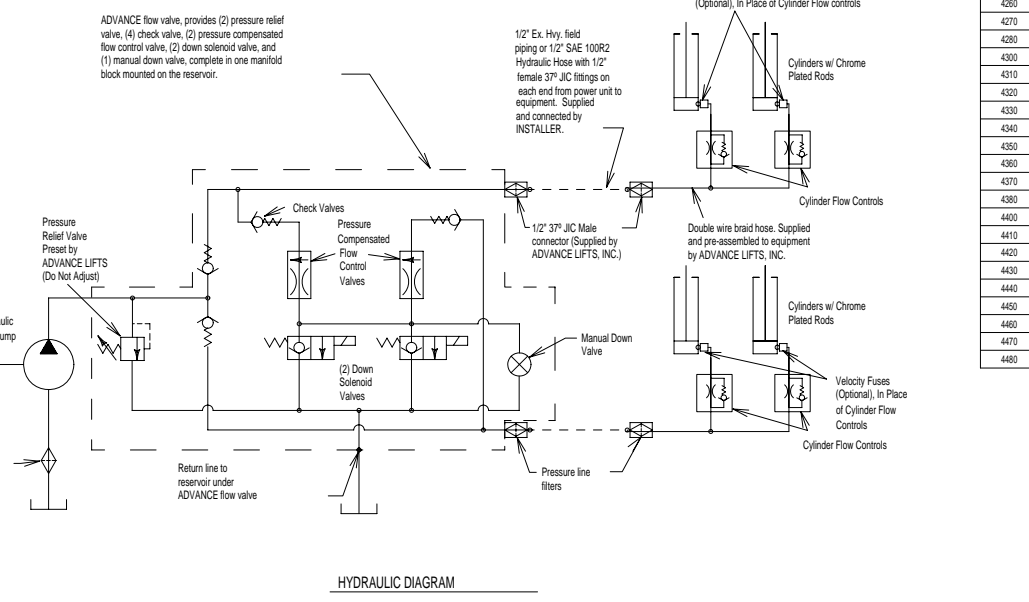
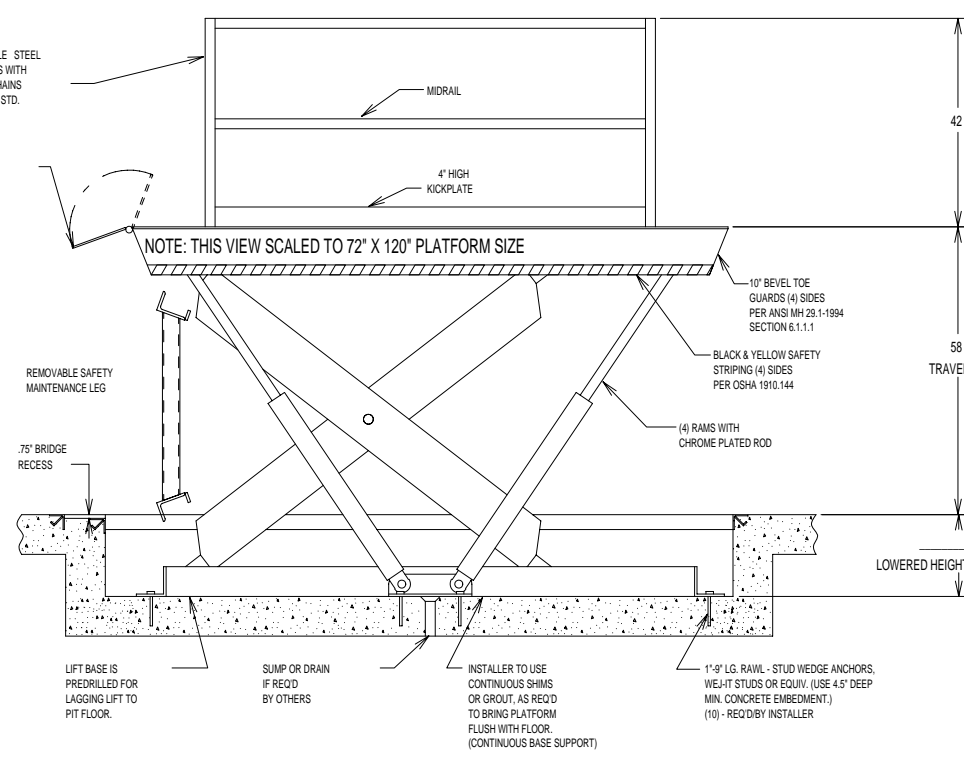


TABLE A

| MODEL # | PLATFORM WIDTH (INCHES) | PLATFORM LENGTH (INCHES) | CAPACITY (LBS) | SPEED (FPM) | AXLE CAPACITY ENDS | AXLE CAPACITY SIDES | SHIPPING WEIGHT | LOWERED HEIGHT |
|---------|-------------------------|--------------------------|----------------|-------------|--------------------|---------------------|-----------------|----------------|
| 4100 | 72 | 120 | 12,000 | 8 | 9,600 | 8,400 | 5,500 | 16.5 |
| 4110 | 72 | 132 | 12,000 | 8 | 9,600 | 8,400 | 5,700 | 16.5 |
| 4120 | 72 | 144 | 12,000 | 8 | 9,600 | 8,400 | 5,900 | 16.5 |
| 4130 | 84 | 120 | 12,000 | 8 | 9,600 | 8,400 | 5,800 | 16.5 |
| 4140 | 84 | 132 | 12,000 | 8 | 9,600 | 8,400 | 6,050 | 16.5 |
| 4150 | 84 | 144 | 12,000 | 8 | 9,600 | 8,400 | 6,300 | 16.5 |
| 4160 | 96 | 120 | 12,000 | 8 | 9,600 | 8,400 | 6,300 | 16.5 |
| 4170 | 96 | 132 | 12,000 | 8 | 9,600 | 8,400 | 6,600 | 16.5 |
| 4180 | 96 | 144 | 12,000 | 8 | 9,600 | 8,400 | 6,900 | 16.5 |
| 4200 | 72 | 120 | 15,000 | 8 | 12,000 | 10,500 | 5,800 | 16.5 |
| 4210 | 72 | 132 | 15,000 | 8 | 12,000 | 10,500 | 6,000 | 16.5 |
| 4220 | 72 | 144 | 15,000 | 8 | 12,000 | 10,500 | 6,200 | 16.5 |
| 4230 | 84 | 120 | 15,000 | 8 | 12,000 | 10,500 | 6,100 | 16.5 |
| 4240 | 84 | 132 | 15,000 | 8 | 12,000 | 10,500 | 6,350 | 16.5 |
| 4250 | 84 | 144 | 15,000 | 8 | 12,000 | 10,500 | 6,600 | 16.5 |
| 4260 | 96 | 120 | 15,000 | 8 | 12,000 | 10,500 | 6,600 | 16.5 |
| 4270 | 96 | 132 | 15,000 | 8 | 12,000 | 10,500 | 6,900 | 16.5 |
| 4280 | 96 | 144 | 15,000 | 8 | 12,000 | 10,500 | 7,200 | 16.5 |
| 4300 | 72 | 120 | 18,000 | 8 | 14,400 | 12,600 | 6,400 | 18 |
| 4310 | 72 | 132 | 18,000 | 8 | 14,400 | 12,600 | 6,600 | 18 |
| 4320 | 72 | 144 | 18,000 | 8 | 14,400 | 12,600 | 6,800 | 18 |
| 4330 | 84 | 120 | 18,000 | 8 | 14,400 | 12,600 | 6,700 | 18 |
| 4340 | 84 | 132 | 18,000 | 8 | 14,400 | 12,600 | 6,950 | 18 |
| 4350 | 84 | 144 | 18,000 | 8 | 14,400 | 12,600 | 7,200 | 18 |
| 4360 | 96 | 120 | 18,000 | 8 | 14,400 | 12,600 | 7,200 | 18 |
| 4370 | 96 | 132 | 18,000 | 8 | 14,400 | 12,600 | 7,500 | 18 |
| 4380 | 96 | 144 | 18,000 | 8 | 14,400 | 12,600 | 7,800 | 18 |
| 4400 | 72 | 120 | 20,000 | 8 | 16,000 | 14,000 | 6,900 | 20 |
| 4410 | 72 | 132 | 20,000 | 8 | 16,000 | 14,000 | 7,300 | 20 |
| 4420 | 72 | 144 | 20,000 | 8 | 16,000 | 14,000 | 7,900 | 20 |
| 4430 | 84 | 120 | 20,000 | 8 | 16,000 | 14,000 | 7,000 | 20 |
| 4440 | 84 | 132 | 20,000 | 8 | 16,000 | 14,000 | 7,400 | 20 |
| 4450 | 84 | 144 | 20,000 | 8 | 16,000 | 14,000 | 8,000 | 20 |
| 4460 | 96 | 120 | 20,000 | 8 | 16,000 | 14,000 | 8,000 | 20 |
| 4470 | 96 | 132 | 20,000 | 8 | 16,000 | 14,000 | 7,800 | 20 |
| 4480 | 96 | 144 | 20,000 | 8 | 16,000 | 14,000 | 8,100 | 20 |

SEE TABLE A FOR BELOW INFORMATION

SPECIFICATIONS:

CAPACITY: _____ LBS MAX. LIFTING CAPACITY
 _____ LBS MAX. AXLE CAPACITY ENDS
 _____ LBS MAX. AXLE CAPACITY SIDES

PLATFORM: PLATFORM WIDTH _____ X PLATFORM LENGTH _____

SAFETY TREAD DECK,
 REMOVABLE HANDRAILS - STEEL
 SEE TABLE B FOR BELOW BRIDGE INFORMATION
 BRIDGE LENGTH _____ X BRIDGE WIDTH _____
 SPLIT OR SOLID ALUMINUM OR STEEL BRIDGES
 ALL WITH CHAINS
 BEVEL TOE GUARDS
 SAFETY STRIPING

SPEED: _____ FPM

TRAVEL: 58" (FROM A _____ LOWERED HEIGHT)

LOWERED HEIGHT: _____"

POWER UNIT: 7.5 HP MOTOR 230 V 60 Hz 3PH
 (REMOTE FROM LIFT) (*4100 SERIES USES 5 HP MOTOR)

CONTROL: UP-DOWN WEATHER-PROOF PUSHBUTTON
 STATION, PENDANT TYPE NEMA 1, 3, 3R, 4, 4X

IN NEMA 12 ENCLOSURE: MAGNETIC STARTER/W/ OVERLOAD
 230 V TO 24 V CONTROL TRANSFORMER,

APPROXIMATE SHIPPING WEIGHT: _____ #

ADVANCE LIFTS

Advance Lifts, Inc. 701 Kirk Rd.
 St. Charles, IL 60174
 Phone: 708-584-6881 Fax: 708-584-9405

JOB NUMBER: X

JOB NUMBER: X

SCALE: 1" = 05208"

DATE: X

DRAWN: X

REV: D-

TITLE: SUPERDOK SERIES 4000