

**TABLE A**

MODEL #	PLATFORM WIDTH (INCHES)	PLATFORM LENGTH (INCHES)	CAPACITY (LBS.)	SPEED (FPM)	AXLE CAPACITY ENDS	AXLE CAPACITY SIDES	SHIPPING WEIGHT	LOWERED HEIGHT
3200	72	96	8,000	10	6,500	5,000	4,200	15
3210	72	108	8,000	10	6,500	5,000	4,350	15
3220	72	120	8,000	10	6,500	5,000	4,500	15
3230	84	96	8,000	10	6,500	5,000	4,400	15
3240	84	108	8,000	10	6,500	5,000	4,575	15
3250	84	120	8,000	10	6,500	5,000	4,750	15
3260	96	96	8,000	10	6,500	5,000	4,600	15
3270	96	108	8,000	10	6,500	5,000	4,800	15
3280	96	120	8,000	10	6,500	5,000	5,000	15
3300	72	96	10,000	8	7,500	5,000	4,525	15
3310	72	108	10,000	8	7,500	5,000	4,705	15
3320	72	120	10,000	8	7,500	5,000	4,885	15
3330	84	96	10,000	8	7,500	5,000	4,765	15
3340	84	108	10,000	8	7,500	5,000	4,975	15
3350	84	120	10,000	8	7,500	5,000	5,185	15
3360	96	96	10,000	8	7,500	5,000	5,005	15
3370	96	108	10,000	8	7,500	5,000	5,245	15
3380	96	120	10,000	8	7,500	5,000	5,485	15

SEE TABLE A FOR BELOW INFORMATION

**SPECIFICATIONS:**

CAPACITY: \_\_\_\_\_ LBS MAX. LIFTING CAPACITY  
 \_\_\_\_\_ LBS MAX. AXLE CAPACITY ENDS  
 \_\_\_\_\_ LBS MAX. AXLE CAPACITY SIDES

PLATFORM: PLATFORM WIDTH \_\_\_\_\_ X PLATFORM LENGTH \_\_\_\_\_  
 SAFETY TREAD DECK,  
 REMOVABLE HANDRAILS - STEEL  
 SEE TABLE B FOR BELOW BRIDGE INFORMATION  
 BRIDGE LENGTH \_\_\_\_\_ X BRIDGE WIDTH \_\_\_\_\_  
 SPLIT OR SOLID ALUMINUM OR STEEL BRIDGES  
 ALL WITH CHAINS  
 BEVEL TOE GUARDS  
 SAFETY STRIPING

SPEED: \_\_\_\_\_ FPM

TRAVEL: 59" (FROM A \_\_\_\_\_" LOWERED HEIGHT)

LOWERED HEIGHT: \_\_\_\_\_"

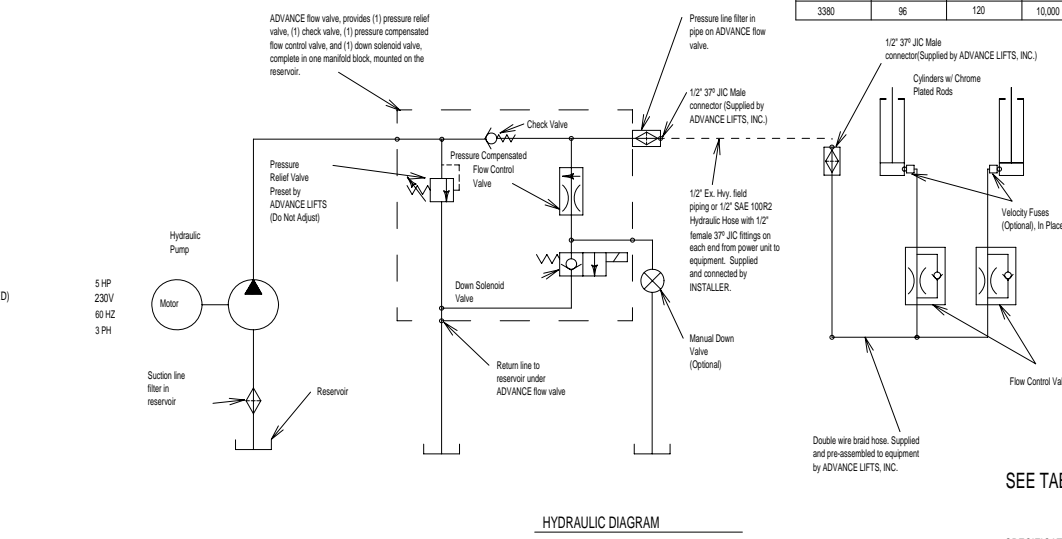
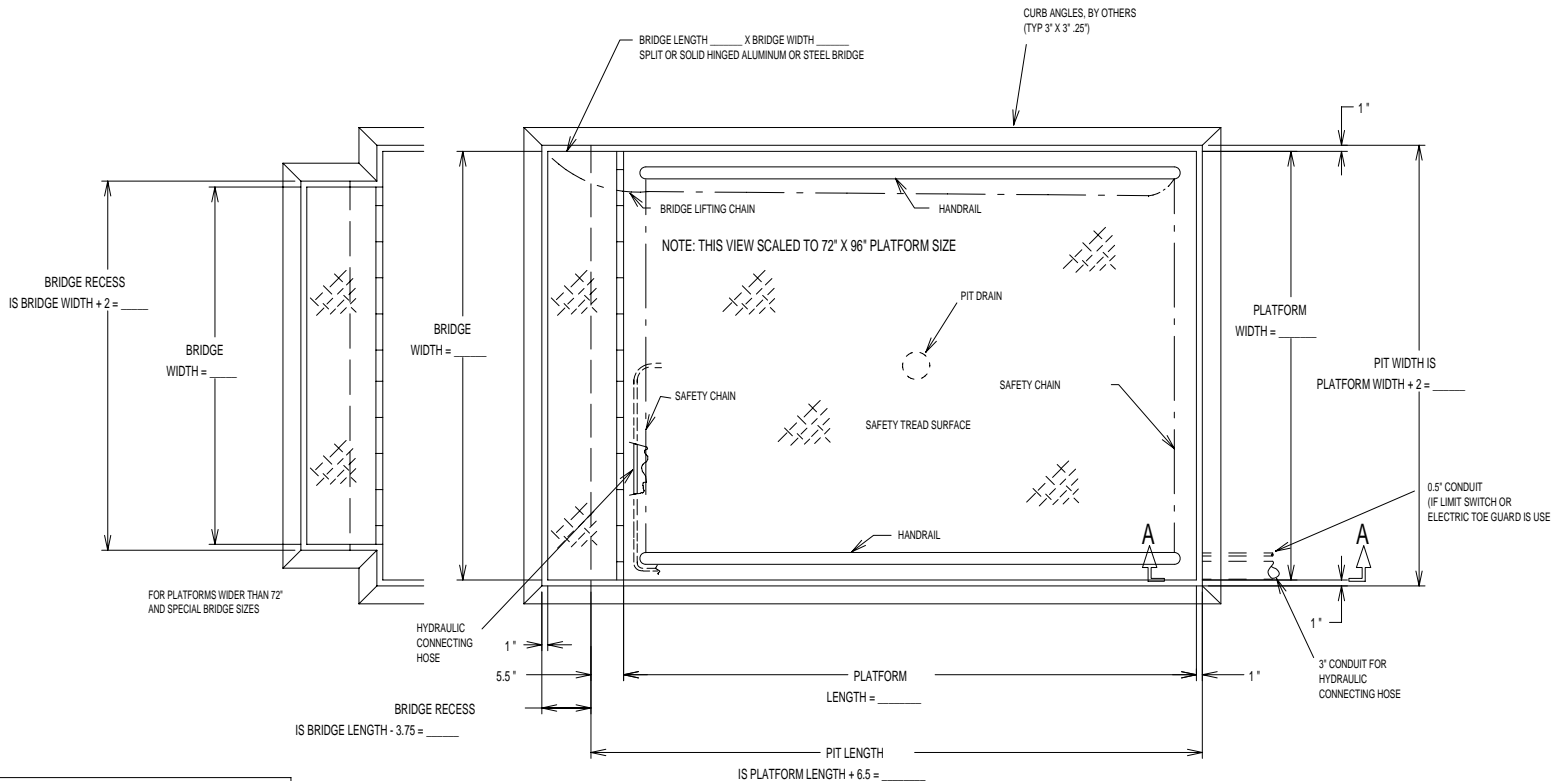
POWER UNIT: 5 HP MOTOR 230 V 60 Hz 3PH  
 (REMOTE FROM LIFT)

CONTROL: UP-DOWN WEATHER-PROOF PUSHBUTTON  
 STATION, PENDANT TYPE NEMA 1, 3, 3R, 4, 4X.

IN NEMA 12 ENCLOSURE - MAGNETIC STARTER, W/ OVERLOAD  
 230 V TO 24 V CONTROL TRANSFORMER.

APPROXIMATE SHIPPING WEIGHT: \_\_\_\_\_ #

<b>ADVANCE LIFTS</b>		Advance Lifts, Inc. 701 Kirk Rd. St. Charles, IL 60174 Phone: 708-584-6881 Fax: 708-584-9405	
JOB NAME	X		
JOB NUMBER	X		
SCALE	1" = .0625"	REVISIONS	BY DATE
DATE	X		
DRAWN	X	CHK	
APPROVED			
TITLE	SUPERDOK SERIES 3000		NO. D-



**TABLE B**

BRIDGE SIZES:

THE STANDARD BRIDGE IS 12' X 72' SOLID STEEL. MAXIMUM BRIDGE SIZES ARE AS FOLLOWS:  
 ONE-PIECE STEEL - 18' X 72'  
 SPLIT STEEL - 24' X 72'  
 ONE-PIECE ALUMINUM - 30' X 72'  
 SPLIT ALUMINUM - 30' X 72'

**GENERAL NOTES:**

- ALL AXLES AND SHAFTS ARE CHROME PLATED.
- ALL ROLLERS AND PIVOT POINTS ARE EQUIPPED WITH TEFLON SELF-LUBRICATING BEARINGS.
- POWER UNIT EQUIPPED WITH ONE PIECE "ADVANCE FLOW" VALVE MANIFOLD.
- INSTALLER TO FURNISH APPROX. 10 GALLONS OF DEXRON III AUTOMATIC TRANSMISSION FLUID.
- REINFORCE CONCRETE TO SUIT LOCAL SOIL CONDITIONS PLUS YOUR DESIRED SAFETY FACTORS.
- OVERALL POWER UNIT SIZE: 26" WIDE X 22" LONG X 21" HIGH (INCLUDING MOTOR, AND BRACKETS FOR WALL MOUNTING).
- CONCRETE WORK, REINFORCING, BUILDING MODIFICATIONS, PIPING, RESERVOIR FLUID, ELECTRICAL WIRING, IMBEDDED ITEMS, INSTALLATION, ETC. (BY OTHERS)
- ADVANCE LIFTS, INC. TO SUPPLY (1) 20' LG. PUSHBUTTON COIL CORD.

