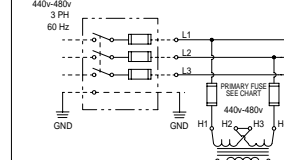


HYDRAULIC DIAGRAM

440v - 480v, 3 Phase Change DETAIL

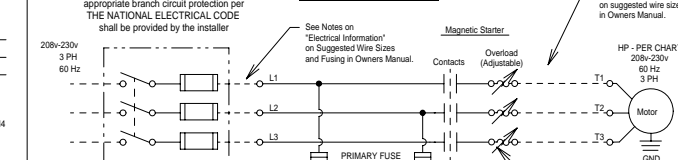


● DENOTES CONNECTION BLOCK LABELING IN ADVANCE MOTOR CONTROLLER.

----- DENOTES CONTRACTOR WIRING.

* UNITS WITH (2) DOWN SOLENOIDS, ALL OTHER UNITS LISTED HAVE (1).

208v - 230v, 3 Phase



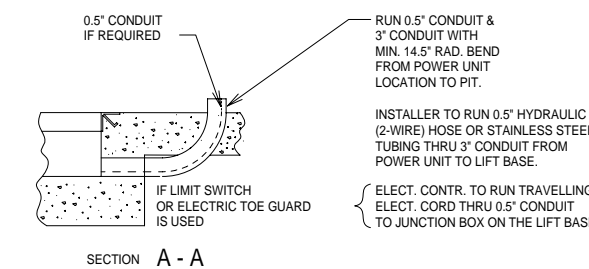
● DENOTES CONNECTION BLOCK LABELING IN ADVANCE MOTOR CONTROLLER.

----- DENOTES CONTRACTOR WIRING.

* UNITS WITH (2) DOWN SOLENOIDS, ALL OTHER UNITS LISTED HAVE (1).

ELECTRICAL DIAGRAM

H.P.	MOTOR R.P.M.	FULL LOAD AMPERAGE (208v-230v / 460v)	TRANSFORMER SIZE	PRIMARY FUSE SIZE (208v-230v/460v)	SECONDARY FUSE SIZE
5	1725	14.8-14 / 7	50 VA	40LR 1NLR 12	FNM 3 2/10



GENERAL NOTES:

- ALL AXLES AND SHAFTS ARE CHROME PLATED.
- ALL ROLLERS AND PIVOT POINTS ARE EQUIPPED WITH TEFLON SELF-LUBRICATING BEARINGS.
- ADVANCE LIFTS, INC. TO SUPPLY 5 GALLONS OF A MULTI VISCOSITY ISO-46 GROUP II BASE OIL & (1) 20' .5" EXTRA HEAVY DOUBLE WIRE BRAID HOSE (SAE 100R2) FOR THE POWER UNIT TO THE EQUIPMENT CONNECTION WITH .5" JIC FEMALE SWIVEL FITTINGS ON THE ENDS.
- REINFORCE CONCRETE TO SUIT LOCAL SOIL CONDITIONS PLUS YOUR DESIRED SAFETY FACTORS.
- OVERALL POWER UNIT SIZE:
26" WIDE X 12" LONG X 15" HIGH (INCLUDING MOTOR, AND BRACKETS FOR FLOOR MOUNTING).
- CONCRETE WORK, REINFORCING, BUILDING MODIFICATIONS, PIPING, ELECTRICAL WIRING, EMBEDDED ITEMS, INSTALLATION, ETC. (BY OTHERS)
- ADVANCE LIFTS, INC. TO SUPPLY:
- (1) 20' L.G. PUSHBUTTON COILCORD.
- 20' FEET OF .25" I.D. HYDRAULIC HOSE WITH .25" FEMALE JIC SWIVEL FITTINGS ON THE ENDS FOR THE VENT LINE CONNECTION FROM THE BASEFRAME TO THE POWER UNIT.
- INSTALLATION PACKAGE AS OUTLINED IN GENERAL NOTE #3.
- FINISH: BLUE PAINT
- PIT DIMENSION TOLERANCES ARE PLUS .25", MINUS 0" (+.25" , -0").

SPECIFICATIONS:

CAPACITY : 6,000 LBS MAX. LIFTING CAPACITY
3,000 LBS MAX. AXLE CAPACITY ENDS
3,000 LBS MAX. AXLE CAPACITY SIDES

PLATFORM : 72" WIDE X 96" LONG
SAFETY TREAD DECK
REMOVABLE HANDRAILS - STEEL
BRIDGE: 12" LONG X 72" WIDE,
SOLID STEEL BRIDGE
ALL WITH CHAINS
BEVEL TOE GUARDS
SAFETY STRIPING

SPEED : 10 FPM

TRAVEL : 58" (FROM A 8" LOWERED HEIGHT)

LOWERED HEIGHT : 8"

POWER UNIT : 5 HP MOTOR 230 V 60 Hz 3PH
(REMOTE FROM LIFT)

CONTROL: UP-DOWN WEATHER-PROOF PUSHBUTTON STATION, PENDANT TYPE NEMA 1, 3, 3R, 4, 4X.

IN NEMA 12 ENCLOSURE : MAGNETIC STARTER, W/ OVERLOAD
230 V TO 24 V CONTROL TRANSFORMER,

APPROXIMATE SHIPPING WEIGHT: 2,500 LBS

ALL DIMENSIONS ARE IN INCHES UNLESS OTHERWISE NOTED.

		Advance Lifts, Inc. 701 S. Kirk Rd. St. Charles, IL 60174 Phone: 630-584-9881 Fax: 630-584-9405	
JOB NAME:			
JOB NUMBER:			
SCALE	N.T.S.	REVISIONS	BY DATE
DATE			
DRN	CKD		
APVD			
TITLE	SUPERDOK SERIES T-60608	NO.	REV.
		D-	