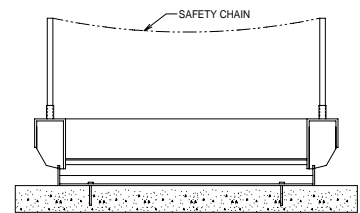
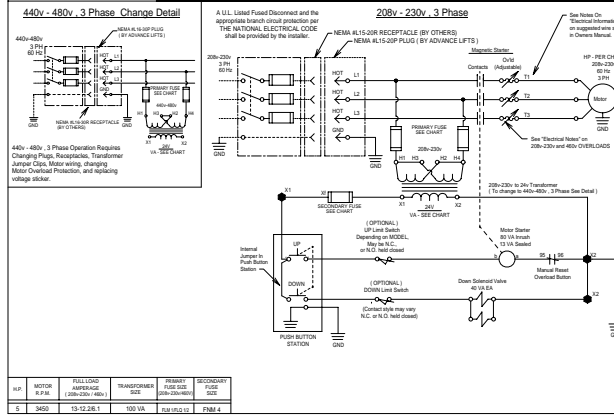
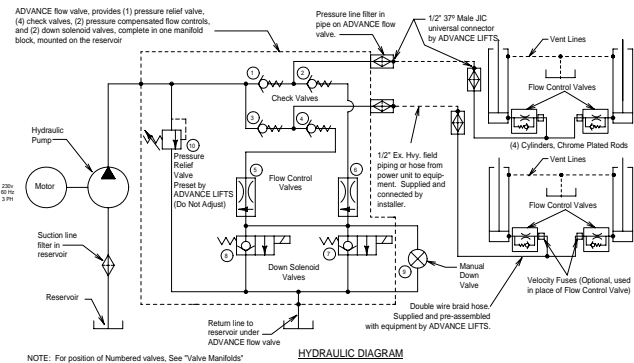
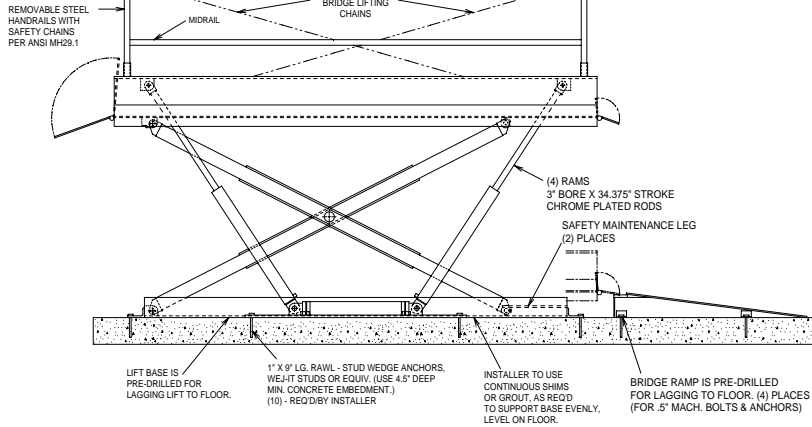
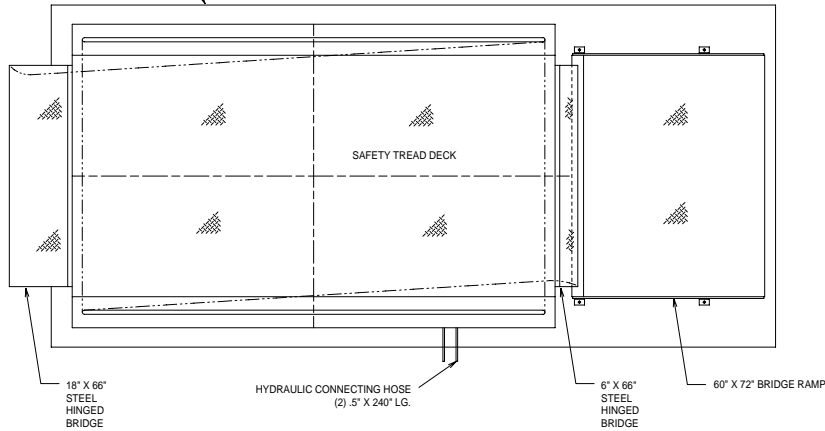


LIFT SHOWN WITH AN 18FT X 8-1/2FT CONCRETE PAD FOR REFERENCE



- SPECIFICATIONS :**
- CAPACITY : 12,000 LB. MAX. (LIFTING)
8,600 LB. MAX. (END LOAD)
 - PLATFORM : 72" X 144"
SAFETY TREAD SURFACES
REMOVABLE HANDRAILS - STEEL
18" X 66" STEEL BRIDGE WITH CHAIN
6" X 66" STEEL RAMP TRANSITION BRIDGE
SAFETY MAINTENANCE LEG
60" X 72" FIXED STEEL RAMP
 - SPEED : 10 FPM
 - TRAVEL : 52"
 - LOWERED HEIGHT : 8"
 - POWER UNIT : REMOTE FROM LIFT,
5 HP MOTOR
230 V 60 HZ 3 PH
 - CONTROL : UP-DOWN, WEATHERPROOF
PUSHBUTTON STATION,
(PENDANT TYPE NEMA 1, 3, 3R, 4, 4X)
 - IN NEMA 12 ENCLOSURE MAGNETIC STARTER
24V CONTROL TRANSFORMER
- NOTES :**
- STANDARD NEMA ENCLOSURES.
 - SUPPLIED BY ADVANCE LIFTS, INC. :
- MOTOR,
- PUSHBUTTONS,
- DOWN SOLENOIDS,
- MAGNETIC STARTER,
- TRANSFORMER.

	HUBBELL PLUG	HUBBELL RECEPTACLE
230V 3PH	#2421 OR NEMA L15-20P	#2420 OR NEMA L15-20R
480V 3PH	#2731 OR NEMA L16-30P	#2730 OR NEMA L16-30R

- SUPPLIED BY ADVANCE LIFTS, INC.
- SUPPLIED BY CUSTOMER
- INTERCONNECTING WIRING IS BY ADVANCE LIFTS, INC.
 - ADVANCE LIFTS, INC. TO SUPPLY:
 - (1) 5 FT LG. POWER CORD WITH PLUG ATTACHED (FROM POWER UNIT TO PLUG).
 - (1) 10 FT LG. PUSHBUTTON CORD.
 - (2) 20 FT LG. HYDRAULIC HOSES FOR POWER UNIT TO LIFT CONNECTION.
 - (2) 10 FT LENGTHS OF CHANNEL TO PROTECT THE HYDRAULIC HOSES EXTENDING FROM THE LIFT TO THE POWER UNIT.
 - (2) 20 FT LENGTH OF 25 OD CLEAR POLYURETHANE TUBING FOR THE VENT LINES.
 - OVERALL POWER UNIT SIZE:
21" W X 27" L X 33" H (INCLUDING MOTOR) WITH BRACKETS FOR WALL MOUNTING.
 - INSTALLER TO FURNISH APPROX. 14 GAL OF A MULTI-VISCOUSITY ISO-VG GROUP #1 BASE OIL.
 - PAINT FINISH: BLUE PAINT
 - APPROX SHIPPING WEIGHT: 7,900 LB

ADVANCE LIFTS

Advance Lifts, Inc. 701 S. KVA Rd
St. Charles, IL 60174
Phone: (630) 684-9881 Fax: (630) 684-9425

JOB NAME: X

JOB NUMBER: X

SCALE: X

DATE: X

REV: X

BY: []

DATE: []

REV: []

TITLE: SUPERDOK MODEL 6300

NO. D-