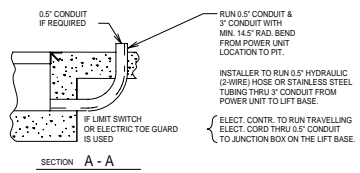


- GENERAL NOTES:**
- ALL AXLES AND SHOOTS ARE CHROME PLATED.
 - ALL ROLLERS AND PIVOT POINTS ARE EQUIPPED WITH TEFLON SELF-LUBRICATING BEARINGS.
 - POWER UNIT EQUIPPED WITH ONE PIECE "ADVANCE FLOW" VALVE MANIFOLD.
 - INSTALLER TO FURNISH APPROX. 10 GALLONS OF A MULTI VISCOSITY ISO-46 GROUP II BASE OIL & (1) 20 LG. 5" EXTRA HEAVY, DOUBLE WIRE BRAID HOSE (SAE 100R24) OR EXTRA HEAVY SEAMLESS PIPING FROM THE POWER UNIT TO THE EQUIPMENT WITH 5" JIC FEMALE FITTING ON THE ENDS.
 - REINFORCE CONCRETE TO SUIT LOCAL SOIL CONDITIONS PLUS YOUR DESIRED SAFETY FACTORS.
 - OVERALL POWER UNIT SIZE:
26" WIDE X 22" LONG X 21" HIGH (INCLUDING MOTOR, AND BRACKETS FOR WALL MOUNTING).
 - CONCRETE WORK, REINFORCING, BUILDING MODIFICATIONS, PIPING, RESERVOIR FLUID, ELECTRICAL WIRING, IMBEDDED ITEMS, INSTALLATION, ETC. (BY OTHERS).
 - ADVANCE LIFTS, INC. TO SUPPLY:
(-1) 20' LG. PUSHBUTTON CORD
 - FINISH:
- SPECIFICATIONS:**
- CAPACITY: 20,000 LBS MAX. LIFTING CAPACITY
16,000 LBS MAX. AXLE CAPACITY ENDS
14,000 LBS MAX. AXLE CAPACITY SIDES
- PLATFORM: 72" X 144", SAFETY TREAD DECK, REMOVABLE HANDRAILS - STEEL
12" X 72" STEEL BRIDGE WITH CHAIN BEVEL TOE GUARDS
SAFETY STRIPING
- SPEED: 8 FPM (APPROX)
- TRAVEL: 58" (FROM A 20" LOWERED HEIGHT)
- LOWERED HEIGHT: 20"
- POWER UNIT: 7.5 HP MOTOR 230 V 60 Hz 3PH (REMOTE FROM LIFT)
- CONTROL: UP/DOWN WEATHER-PROOF PUSHBUTTON STATION, PENDANT TYPE NEMA 1, 3, 3R, 4, 4X.
- IN NEMA 12 ENCLOSURE - MAGNETIC STARTER, W/ OVERLOAD 230 V TO 24 V CONTROL TRANSFORMER.
- APPROXIMATE SHIPPING WEIGHT: #7,900



DO NOT SCALE DRAWING

ADVANCE LIFTS		Advance Lifts, Inc. 701 E. Kirk Rd. St. Charles, IL 60174 Phone: 630.684.9881 Fax: 630.584.9405	
JOB NO.	X	DATE	
SCALE	CAD	BY	
DATE	X	DATE	
REV	X	DATE	
BY	CD	DATE	
DATE		DATE	
TITLE	SUPERDOK MODEL 4420	NO.	D-