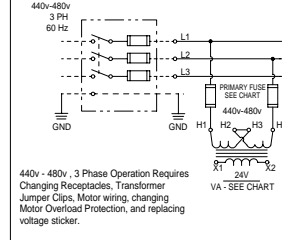
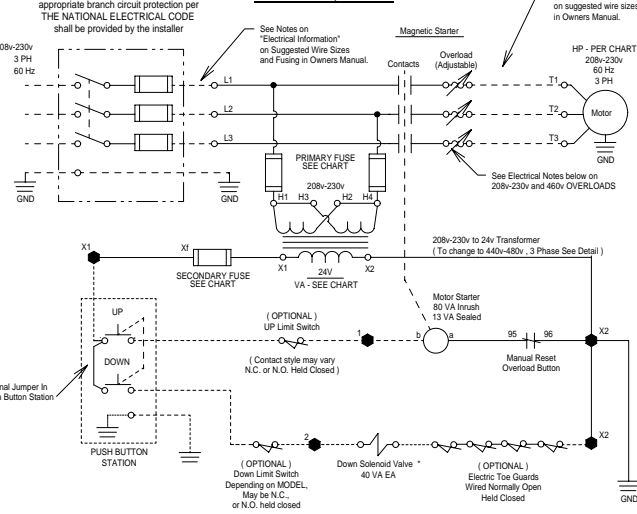


HYDRAULIC DIAGRAM

440v - 480v, 3 Phase Change DETAIL



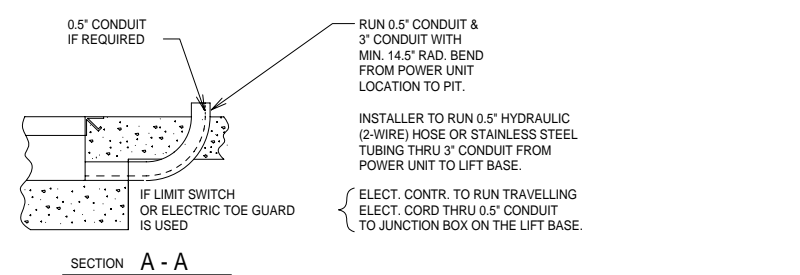
208v - 230v, 3 Phase



ELECTRICAL DIAGRAM

HP.	MOTOR R.P.M.	FULL LOAD AMPERAGE (208v-230v / 480v)	TRANSFORMER SIZE	PRIMARY FUSE SIZE (208v-230v/480v)	SECONDARY FUSE SIZE
5	1725	14.8-14 / 7	50 VA	ALDR 1WLDK 1/2	FNM 3 2/10

- - DENOTES CONNECTION BLOCK LABELING IN ADVANCE MOTOR CONTROLLER.
- DENOTES CONTRACTOR WIRING.
- * - UNITS WITH (2) DOWN SOLENOIDS, ALL OTHER UNITS LISTED HAVE (1).



GENERAL NOTES:

- ALL AXLES AND SHAFTS ARE CHROME PLATED.
- ALL ROLLERS AND PIVOT POINTS ARE EQUIPPED WITH TEFLON SELF-LUBRICATING BEARINGS.
- INSTALLER TO FURNISH APPROX. 10 GALLONS OF A MULTI-VISCOSITY ISO-46 GROUP II BASE OIL & .5" EXTRA HEAVY, DOUBLE WIRE BRAID HOSE (SAE 100R2A) OR EXTRA HEAVY SEAMLESS PIPING FROM THE POWER UNIT TO THE EQUIPMENT WITH .5" JIC FEMALE SWIVEL FITTINGS ON THE ENDS.
- REINFORCE CONCRETE TO SUIT LOCAL SOIL CONDITIONS PLUS YOUR DESIRED SAFETY FACTORS.
- OVERALL POWER UNIT SIZE: 26" WIDE X 20" LONG X 21" HIGH (INCLUDING MOTOR, AND BRACKETS FOR WALL MOUNTING).
- CONCRETE WORK, REINFORCING, BUILDING MODIFICATIONS, RESERVOIR FLUID, PIPING, ELECTRICAL WIRING, EMBEDDED ITEMS, INSTALLATION, ETC. (BY OTHERS)
- ADVANCE LIFTS, INC. TO SUPPLY:
- (1) 20' LG. PUSHBUTTON COILCORD.
- 20' LENGTH OF .25 O.D. CLEAR POLYURETHANE TUBING FOR THE VENT LINES.
- FINISH: BLUE PAINT
- PIT DIMENSION TOLERANCES ARE PLUS .25", MINUS 0" (+.25", -0").

SPECIFICATIONS:

CAPACITY : 5,000 LBS MAX. LIFTING CAPACITY
2,500 LBS MAX. AXLE CAPACITY ENDS
2,500 LBS MAX. AXLE CAPACITY SIDES

PLATFORM : 72" X 86",
SAFETY TREAD DECK,
REMOVABLE HANDRAILS - STEEL
12" X 72" STEEL BRIDGE WITH CHAIN
BEVEL TOE GUARDS
SAFETY STRIPING

SPEED : 12 FPM

TRAVEL : 40" (FROM A 10" LOWERED HEIGHT)

LOWERED HEIGHT : 10"

POWER UNIT : 5 HP MOTOR 230 V 60 HZ 3PH
(REMOTE FROM LIFT)

CONTROL : UP-DOWN WEATHER-PROOF PUSHBUTTON STATION, PENDANT TYPE NEMA 1, 3, 3R, 4, 4X.

IN NEMA 12 ENCLOSURE : MAGNETIC STARTER, W/ OVERLOAD
230 V TO 24 V CONTROL TRANSFORMER,

APPROXIMATE SHIPPING WEIGHT : 2200#

DO NOT SCALE DRAWING

				Advance Lifts, Inc. 701 S. Kirk Rd. St. Charles, IL 60174 Phone: 630-584-9881 Fax: 630-584-9405			
JOB NAME: X							
JOB NUMBER: X							
SCALE: X	REVISIONS		BY	DATE			
DATE: X							
DRW: X	CWD						
APVD:							
TITLE: SUPERDOK MODEL 2400				NO.:	REV.:		
				D-			